



Cortijo del Golf

RESORT
Contemporary Apartments

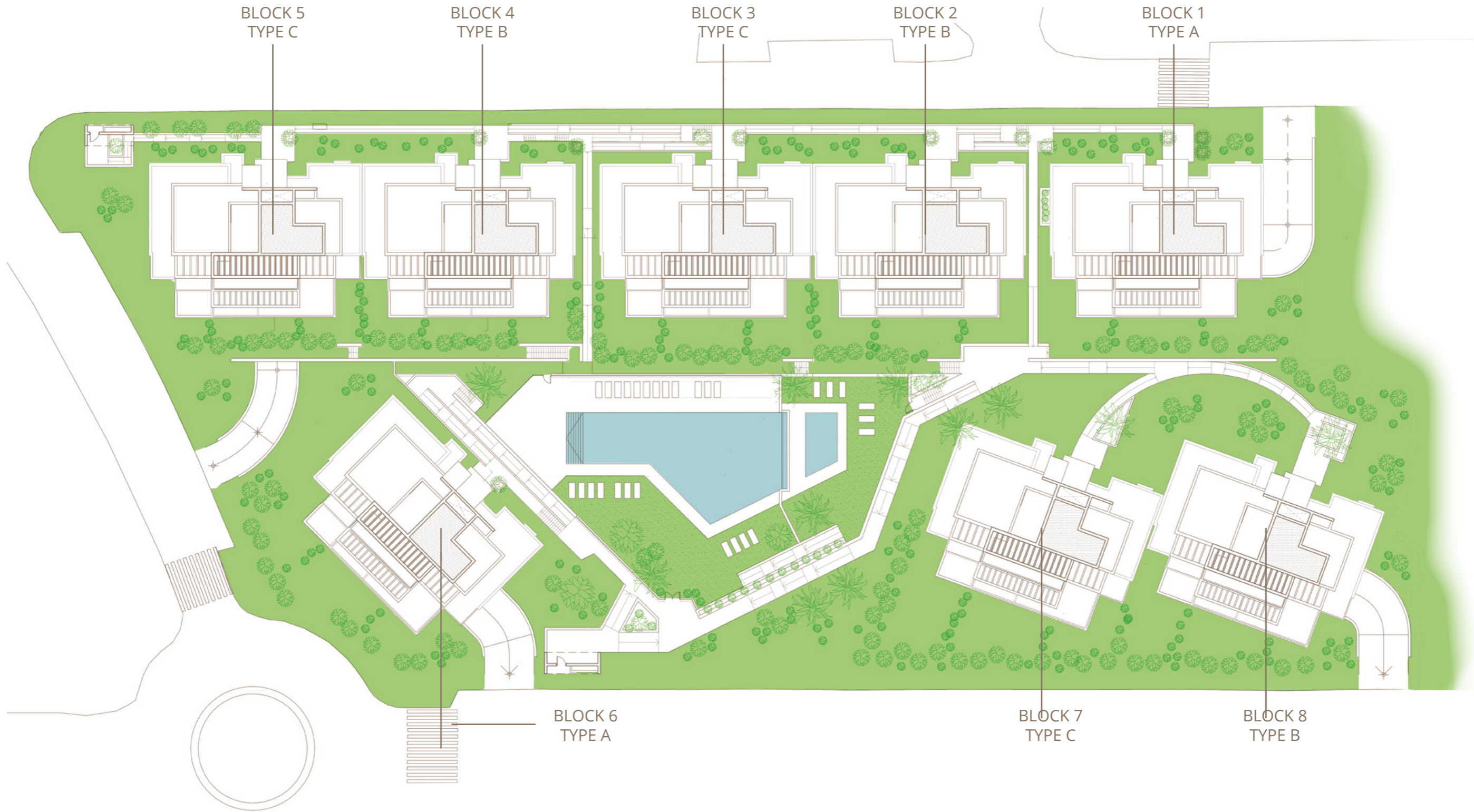
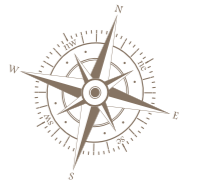


Floor Plans



GENERAL FLOORPLAN

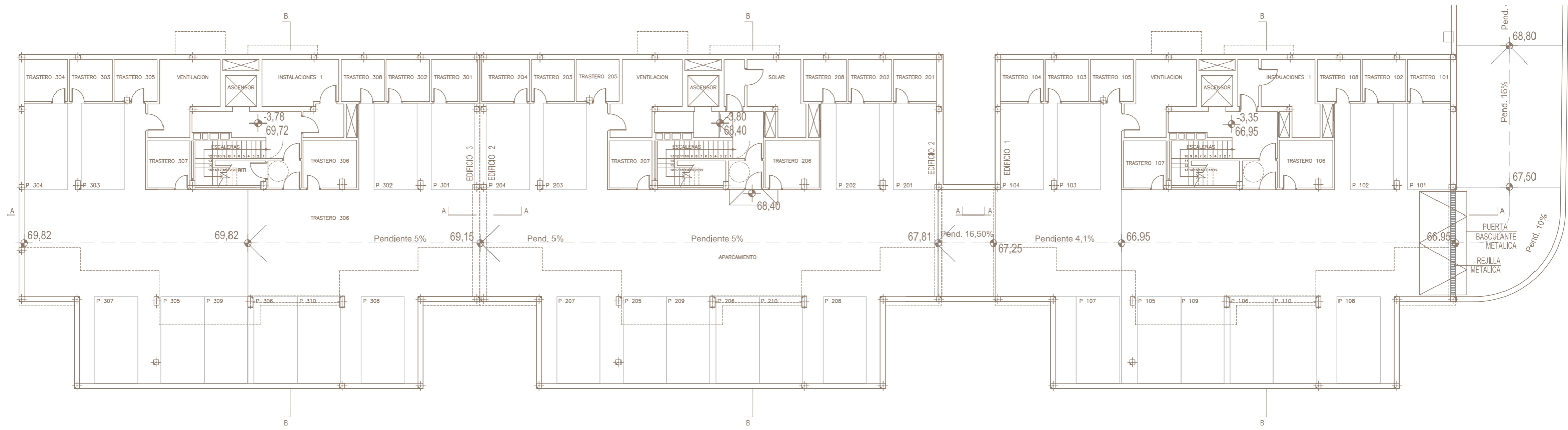
64 APARTMENTS, PARKING
& STORAGE ROOMS





BASEMENT, BLOCK 1,2,3

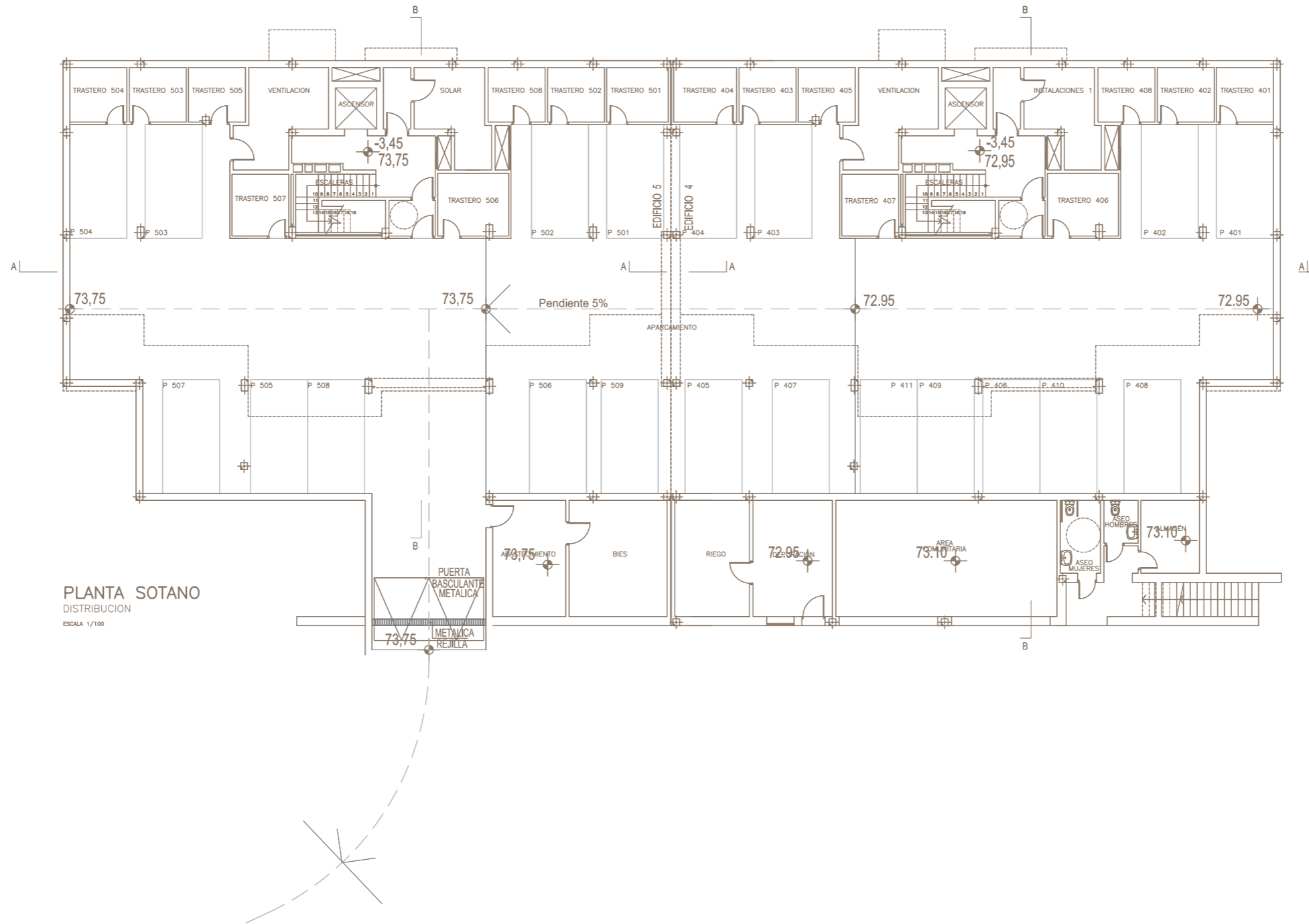
64 APARTMENTS, PARKING
& STORAGE ROOMS





BASEMENT, BLOCK 4,5

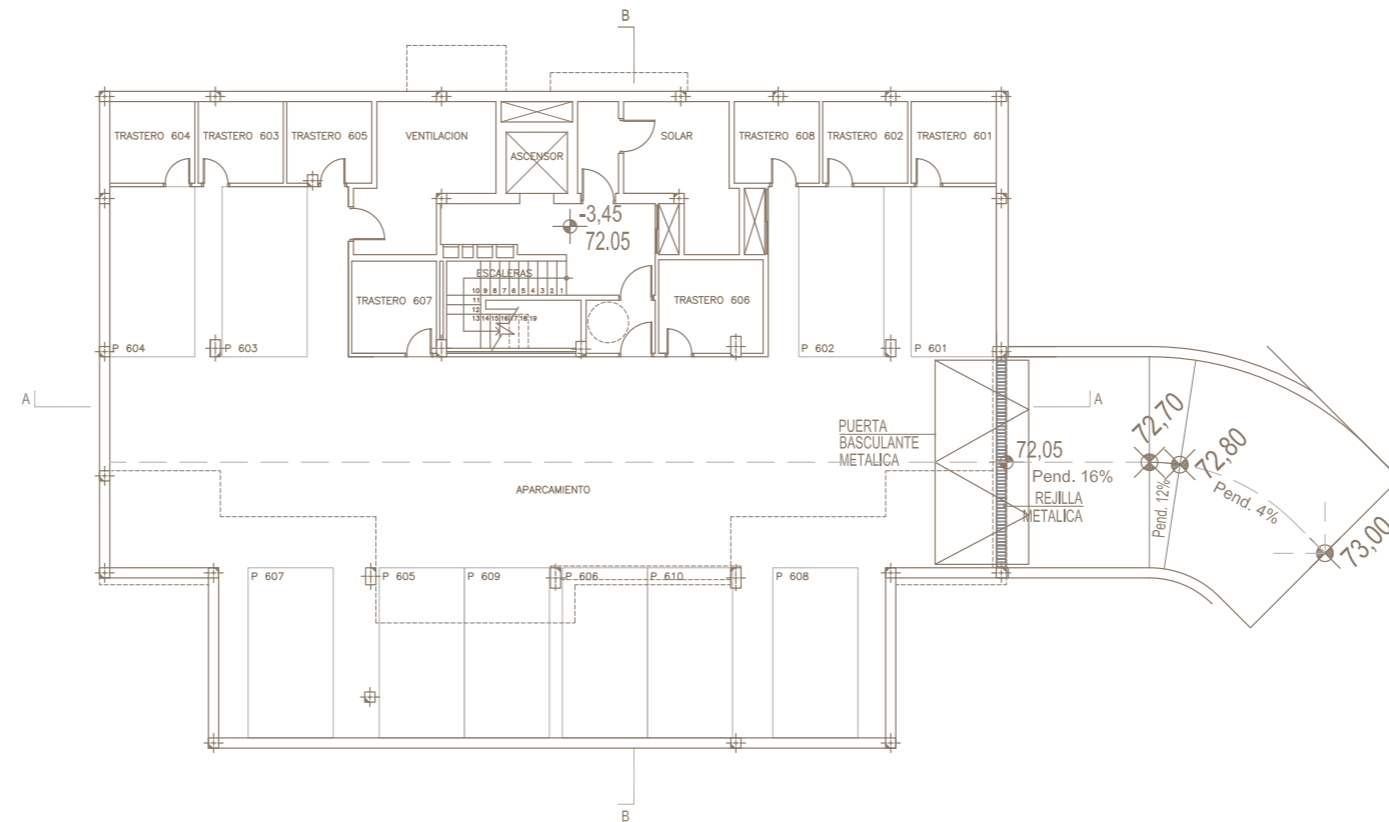
64 APARTMENTS, PARKING
& STORAGE ROOMS





BASEMENT, BLOCK 6

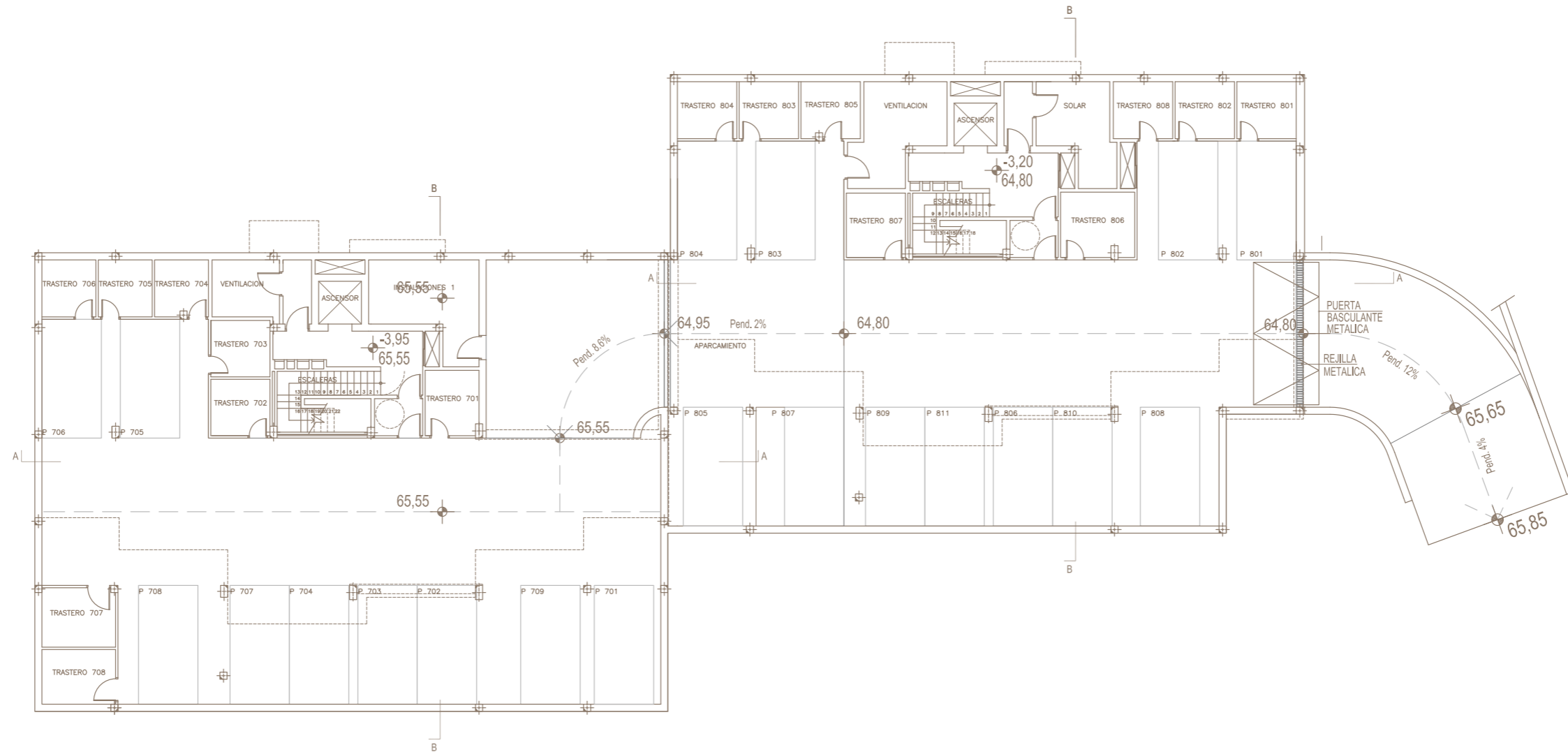
64 APARTMENTS, PARKING
& STORAGE ROOMS





BASEMENT, BLOCK 7,8

64 APARTMENTS, PARKING
& STORAGE ROOMS





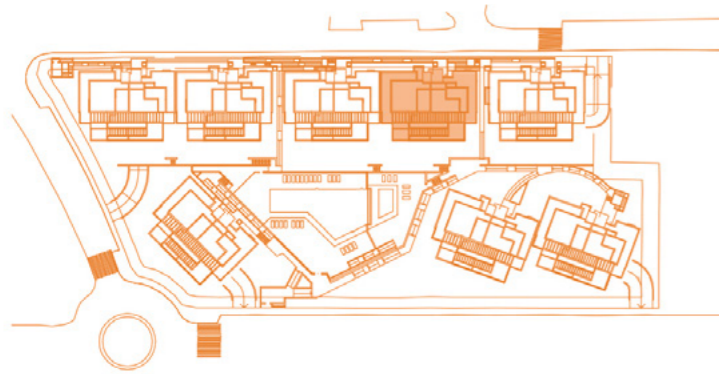
APARTMENTS

2 BEDROOMS

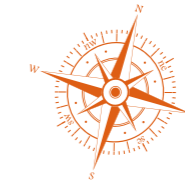
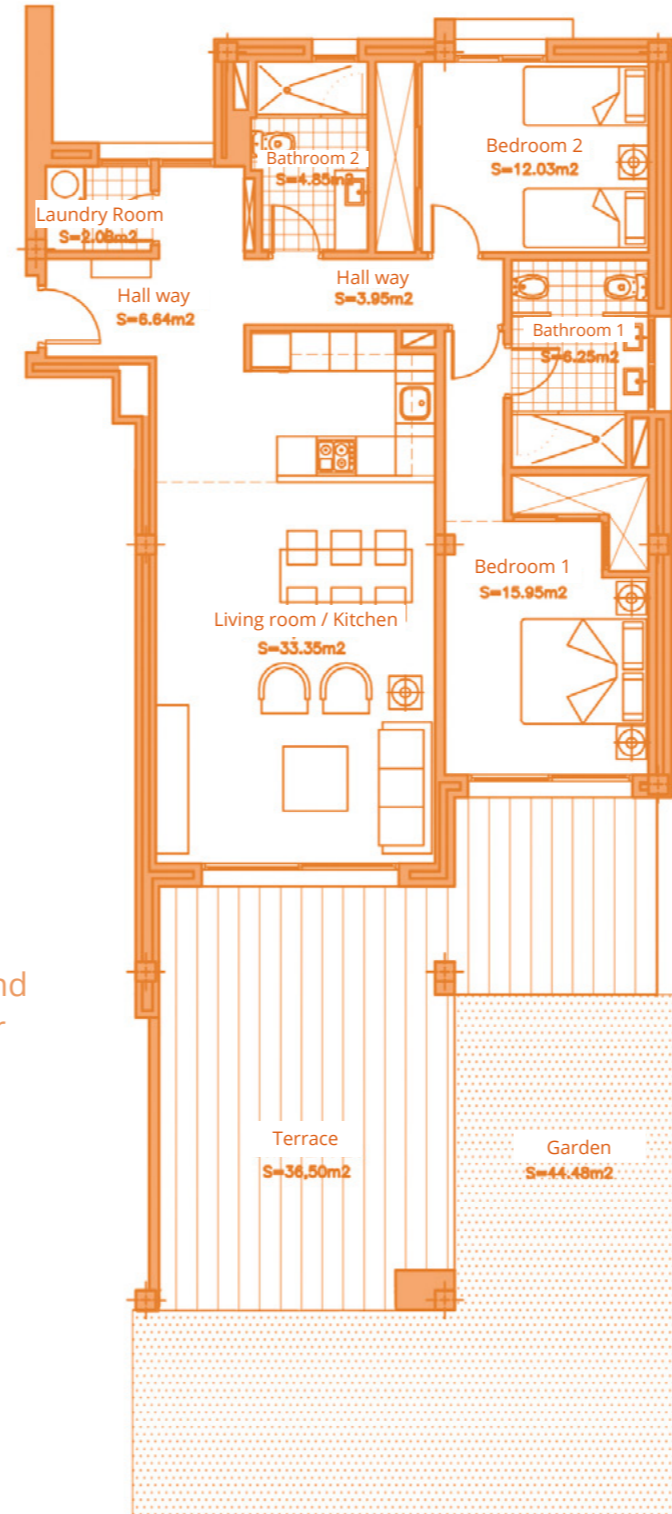




APARTMENT 203
2 BEDROOMS
BLOCK 2, TYPE B. GROUND FLOOR



BLOCK B



SURFACES

Surface of constructed area	101,90 m ²
Surface of communal area	10,89 m ²
Surface of terrace area	36,50 m ²

TOTAL SURFACE

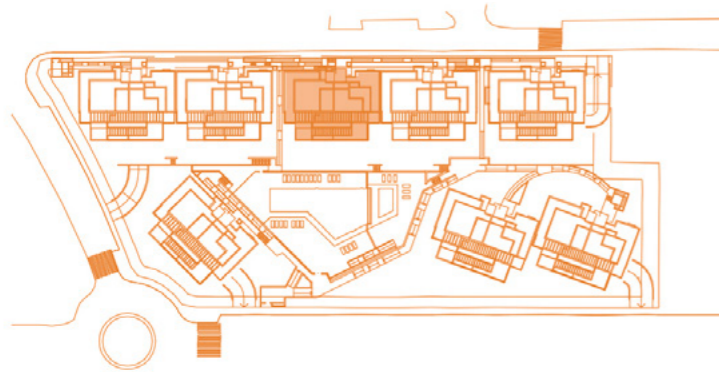
	149,29 m ²
Surface of utilised area	85,10 m ²
Surface of utilised garden area	44,48 m ²

Information given is subject to modification for technical, construction or legal reasons





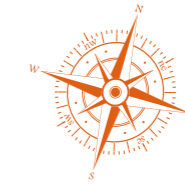
APARTMENT 303
2 BEDROOMS
BLOCK 3, TYPE C. GROUND FLOOR



BLOCK C



Ground floor



SURFACES

Surface of constructed area	101,90 m ²
Surface of communal area	10,89 m ²
Surface of terrace area	36,50 m ²

TOTAL SURFACE

	149,29 m ²
Surface of utilised area	85,10 m ²
Surface of utilised garden area	58,13 m ²

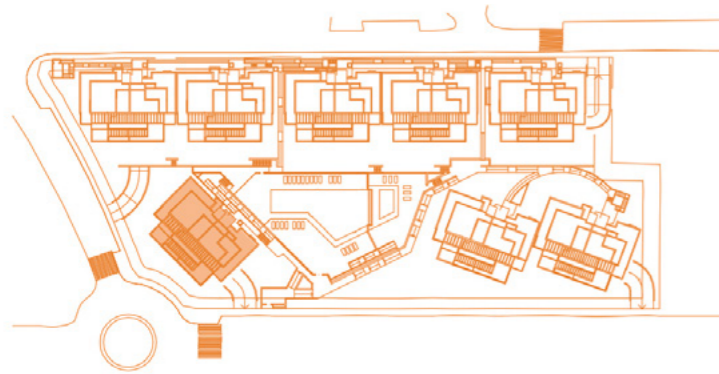
Information given is subject to modification for technical, construction or legal reasons





APARTMENT 603

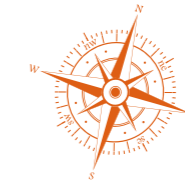
2 BEDROOMS
BLOCK 6, TYPE A. GROUND FLOOR



BLOCK A



Ground floor



SURFACES

Surface of constructed area	101,90 m ²
Surface of communal area	10,89 m ²
Surface of terrace area	36,50 m ²

TOTAL SURFACE

149,29 m²

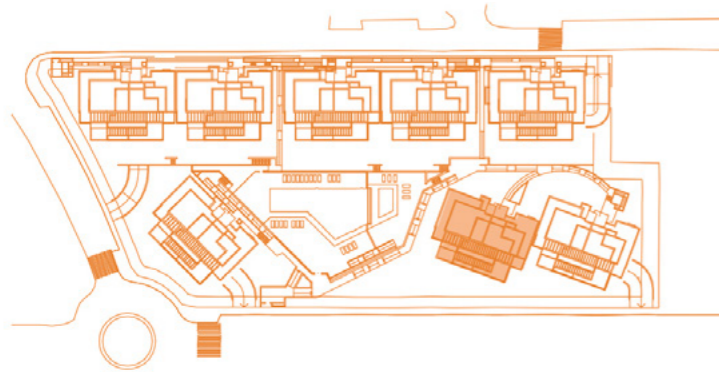
Surface of utilised area	85,10 m ²
Surface of utilised garden area	92,32 m ²

Information given is subject to modification for technical, construction or legal reasons





APARTMENT 703
2 BEDROOMS
BLOCK 7, TYPE C. GROUND FLOOR



BLOCK C



Ground floor



SURFACES

Surface of constructed area	101,90 m ²
Surface of communal area	10,89 m ²
Surface of terrace area	36,50 m ²

TOTAL SURFACE

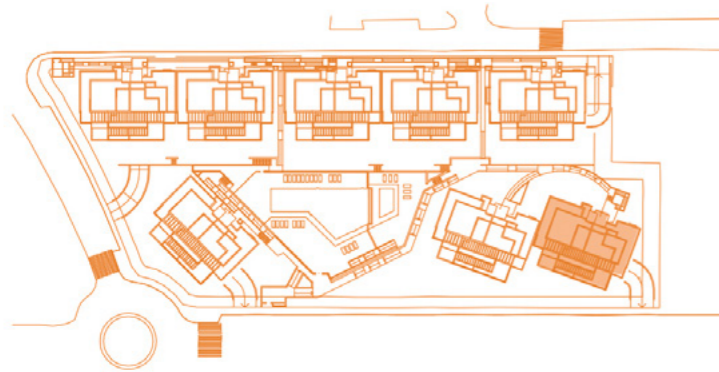
	149,29 m ²
Surface of utilised area	85,10 m ²
Surface of utilised garden area	61,98 m ²

Information given is subject to modification for technical, construction or legal reasons

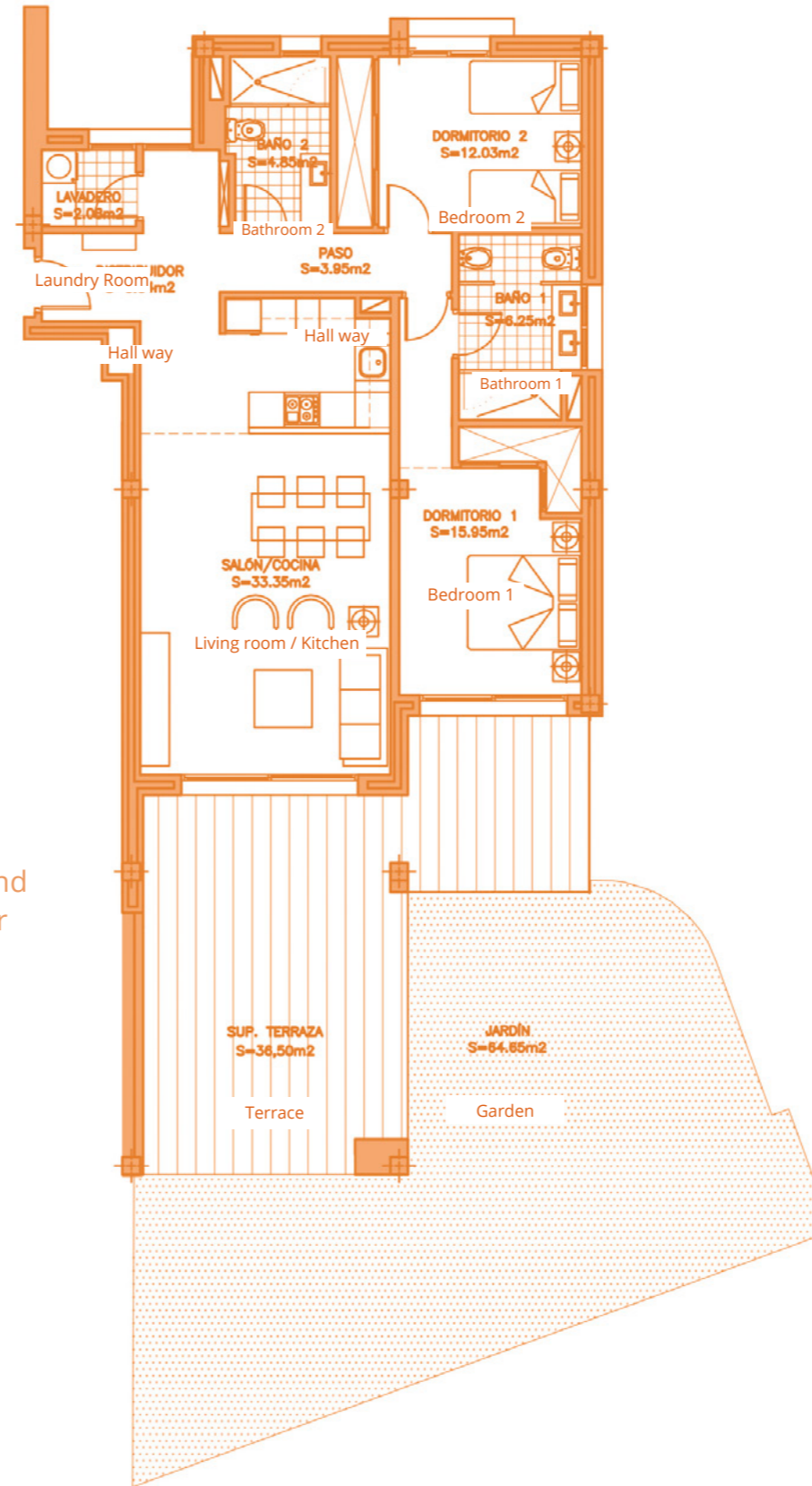




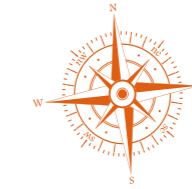
APARTMENT 803
2 BEDROOMS
BLOCK 8, TYPE B. GROUND FLOOR



BLOCK B



Ground floor



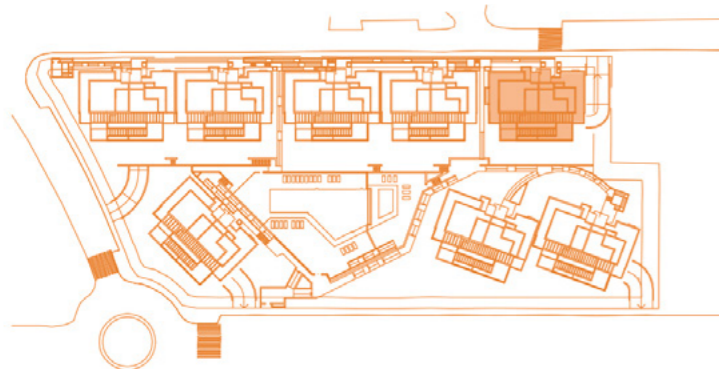
SURFACES	
Surface of constructed area	101,90 m ²
Surface of communal area	10,89 m ²
Surface of terrace area	36,50 m ²
TOTAL SURFACE	149,29 m²
Surface of utilised area	85,10 m ²
Surface of utilised garden area	64,65 m ²

Information given is subject to modification for technical, construction or legal reasons

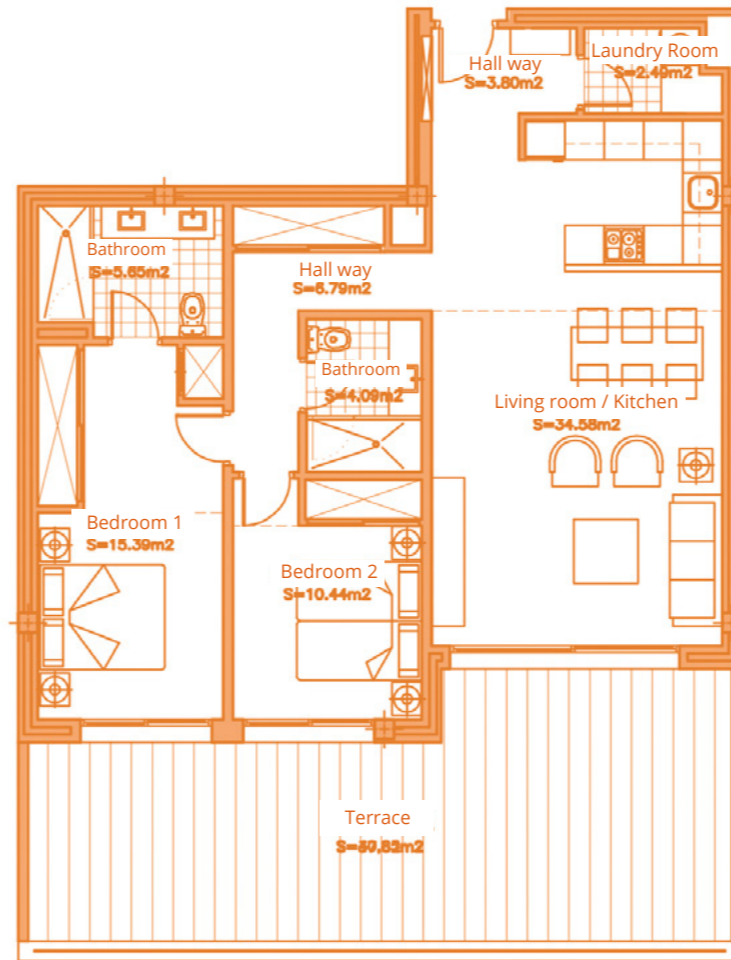




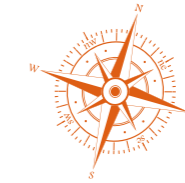
APARTMENT 112
2 BEDROOMS
BLOCK 1, TYPE A. FIRST FLOOR



BLOCK A



First floor



SURFACES

Surface of constructed area	97,35 m ²
Surface of communal area	10,41 m ²
Surface of terrace area	37,82 m ²

TOTAL SURFACE 145,58 m²

Surface of utilised area 83,23 m²

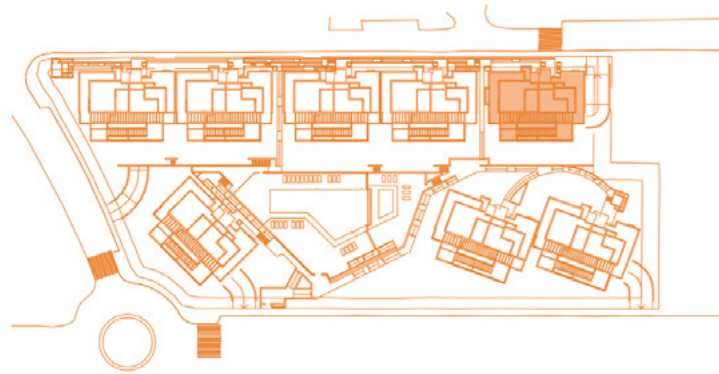
Information given is subject to modification for technical, construction or legal reasons



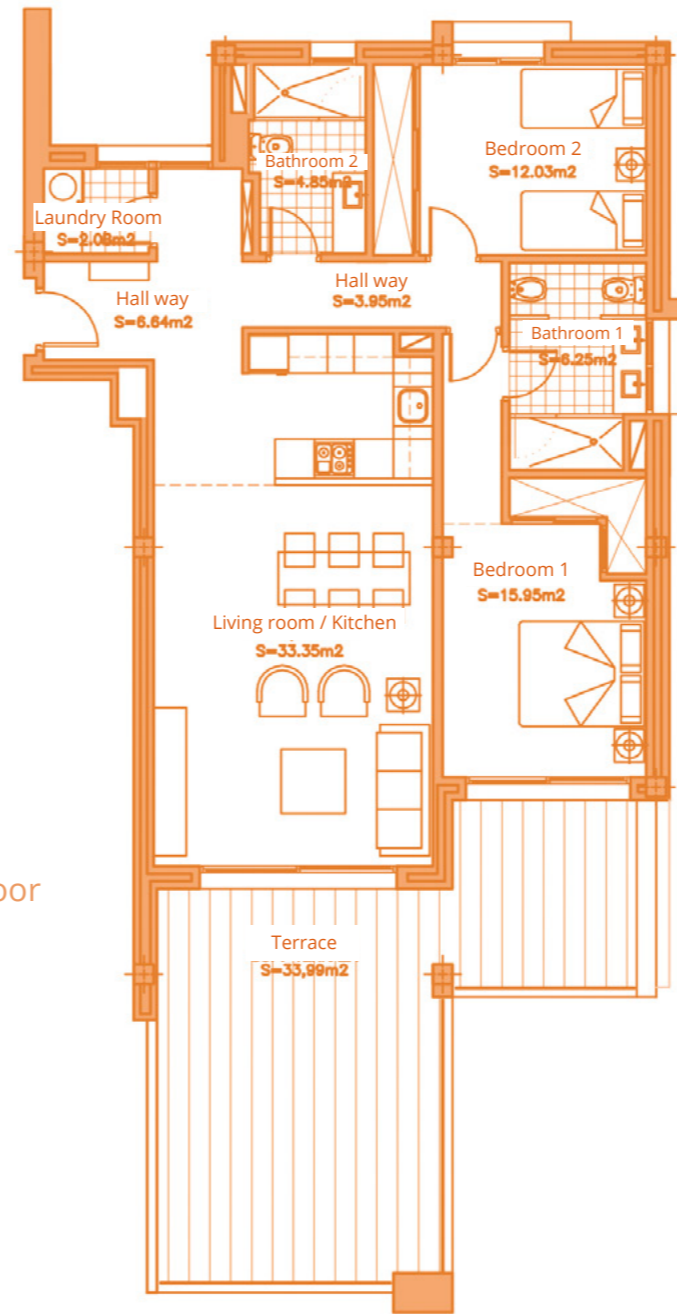
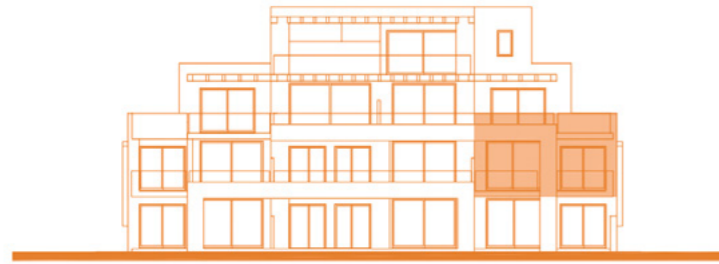
BAR SCALE



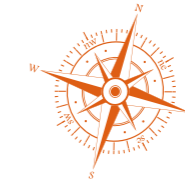
APARTMENT 113
2 BEDROOMS
BLOCK 1, TYPE A. FIRST FLOOR



BLOCK A



First floor



SURFACES

Surface of constructed area	101,90 m ²
Surface of communal area	10,89 m ²
Surface of terrace area	33,99 m ²

TOTAL SURFACE

146,78 m²

Surface of utilised area

85,10 m²

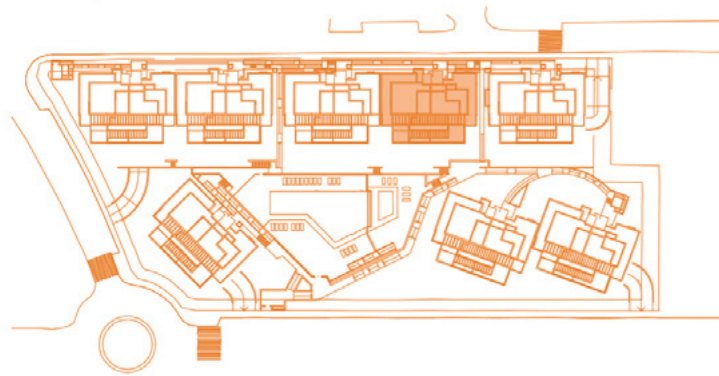
Information given is subject to modification for technical, construction or legal reasons



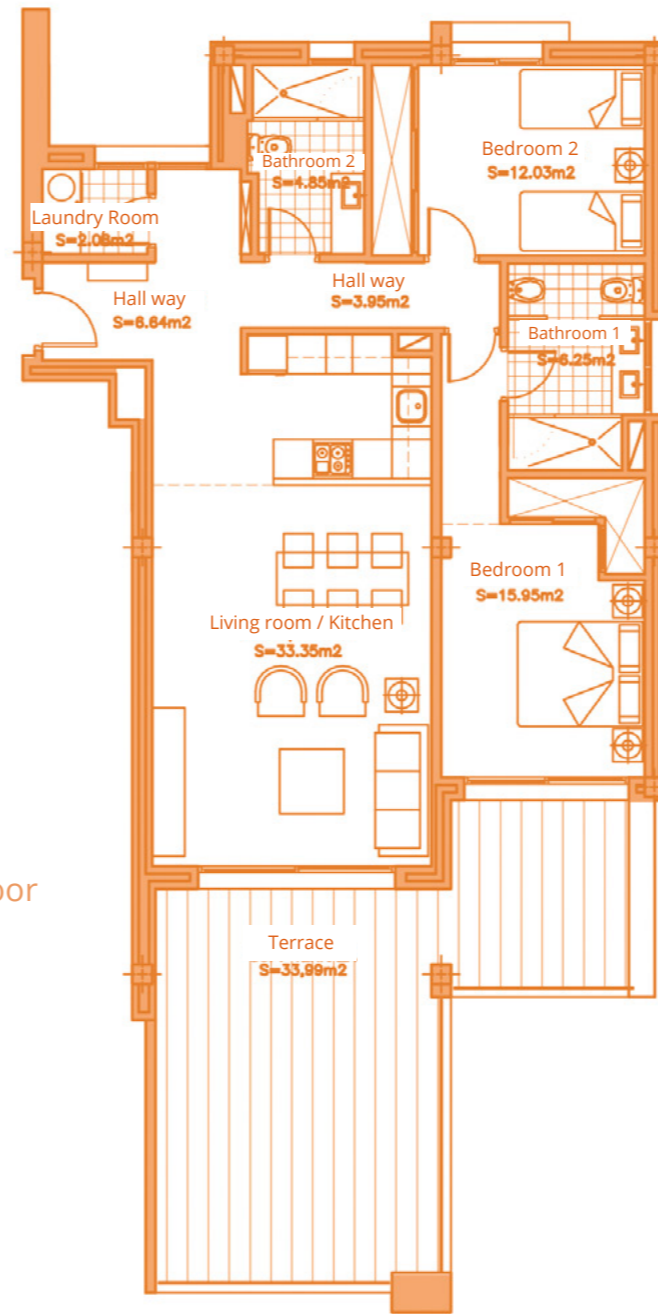
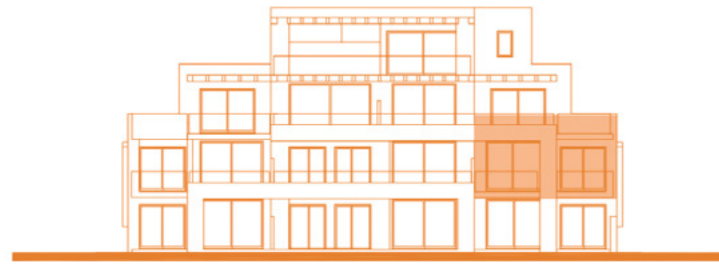
BAR SCALE



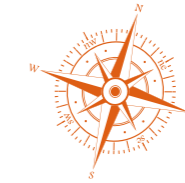
APARTMENT 213
2 BEDROOMS
BLOCK 2, TYPE B. FIRST FLOOR



BLOCK B



First floor



SURFACES

Surface of constructed area	101,90 m ²
Surface of communal area	10,89 m ²
Surface of terrace area	33,99 m ²

TOTAL SURFACE 146,78 m²

Surface of utilised area 85,10 m²

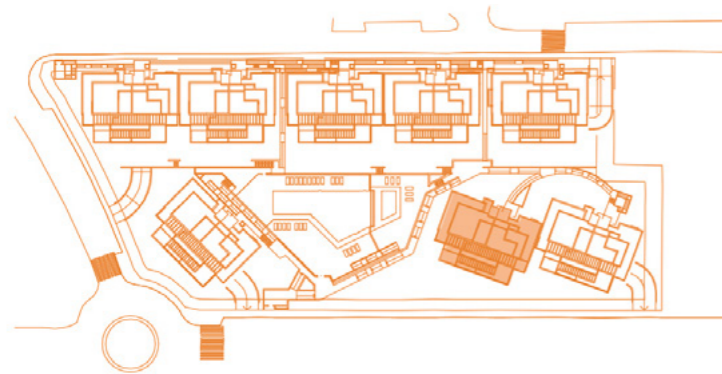
Information given is subject to modification for technical, construction or legal reasons



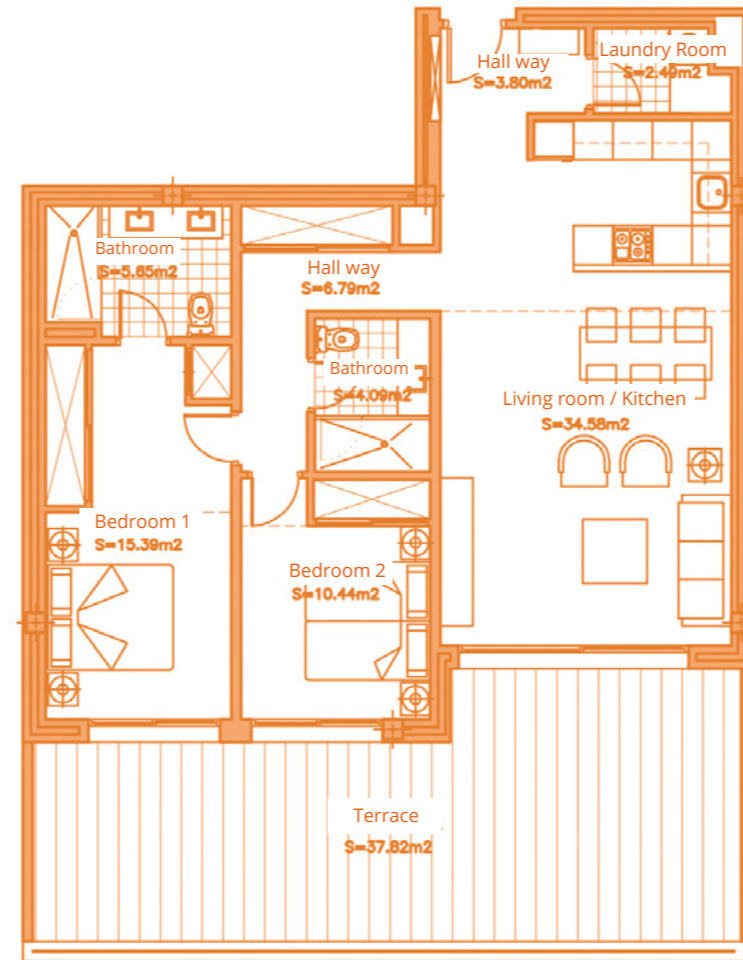
BAR SCALE



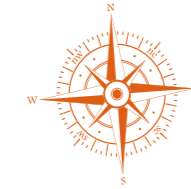
APARTMENT 712
2 BEDROOMS
BLOCK 7, TYPE C. FIRST FLOOR



BLOCK C



First floor



SURFACES

Surface of constructed area	97,35 m ²
Surface of communal area	10,41 m ²
Surface of terrace area	37,82 m ²

TOTAL SURFACE

145,58 m²

Surface of utilised area

83,23 m²

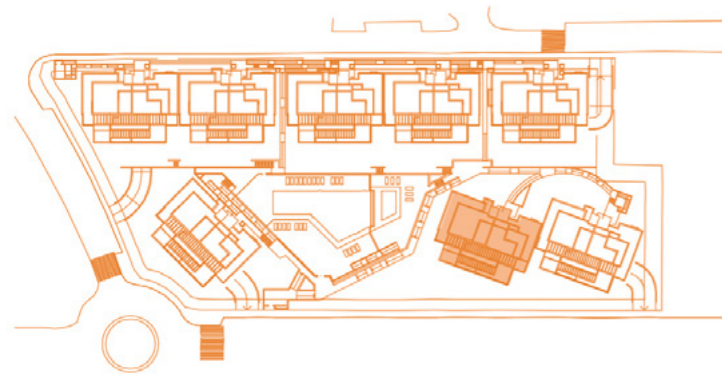
Information given is subject to modification for technical, construction or legal reasons



BAR SCALE



APARTMENT 713
2 BEDROOMS
BLOCK 7, TYPE C. FIRST FLOOR



BLOCK C



First floor



SURFACES

Surface of constructed area	101,90 m ²
Surface of communal area	10,89 m ²
Surface of terrace area	33,99 m ²

TOTAL SURFACE

146,78 m²

Surface of utilised area

85,10 m²

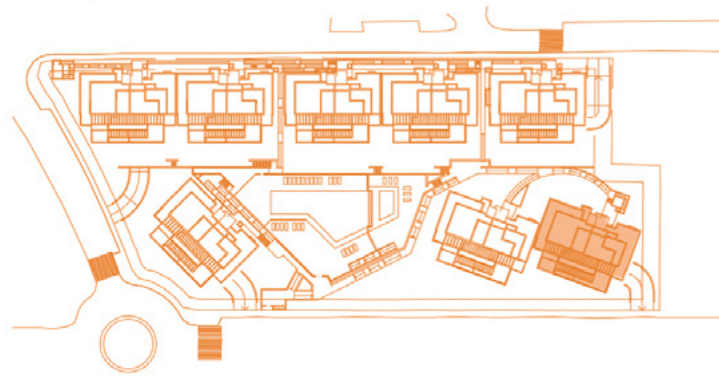
Information given is subject to modification for technical, construction or legal reasons



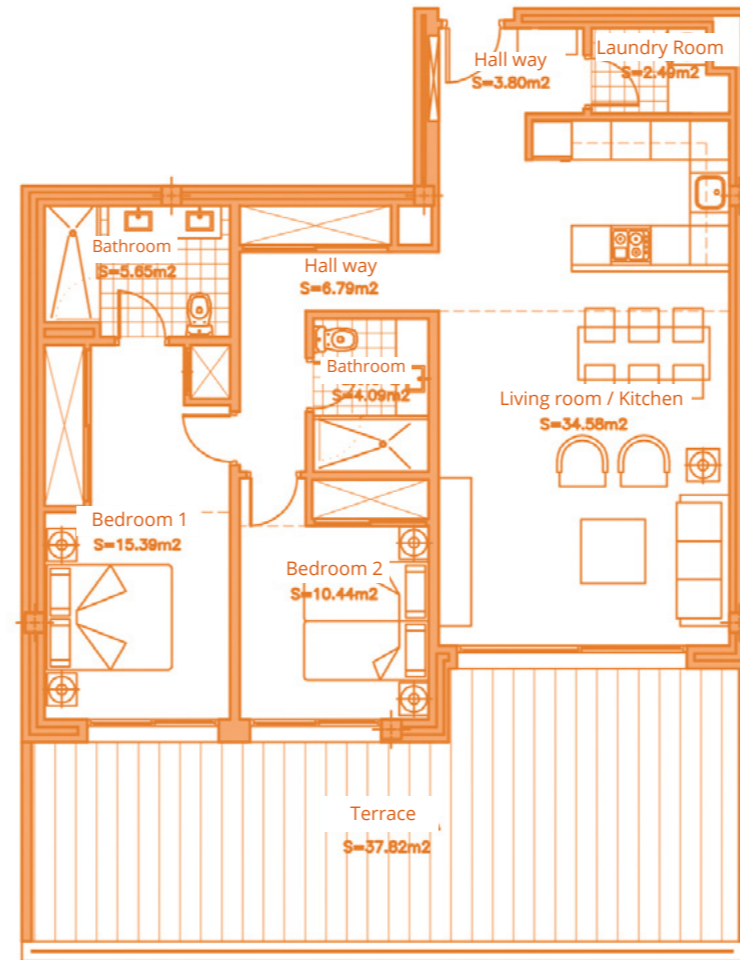
BAR SCALE



APARTMENT 812
2 BEDROOMS
BLOCK 8, TYPE B. FIRST FLOOR



BLOCK B



First floor



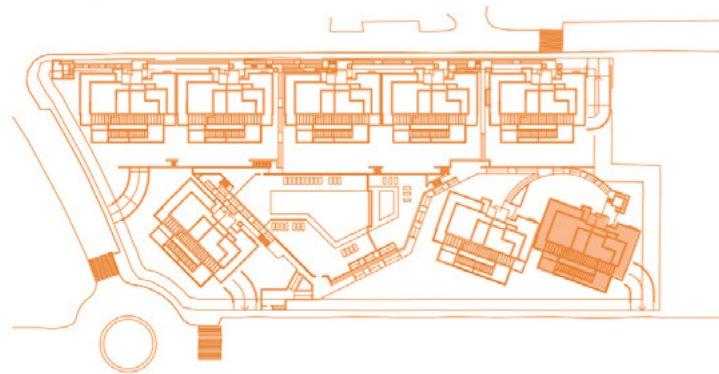
SURFACES	
Surface of constructed area	97,35 m ²
Surface of communal area	10,41 m ²
Surface of terrace area	37,82 m ²
TOTAL SURFACE	145,58 m²
Surface of utilised area	83,23 m ²

Information given is subject to modification for technical, construction or legal reasons

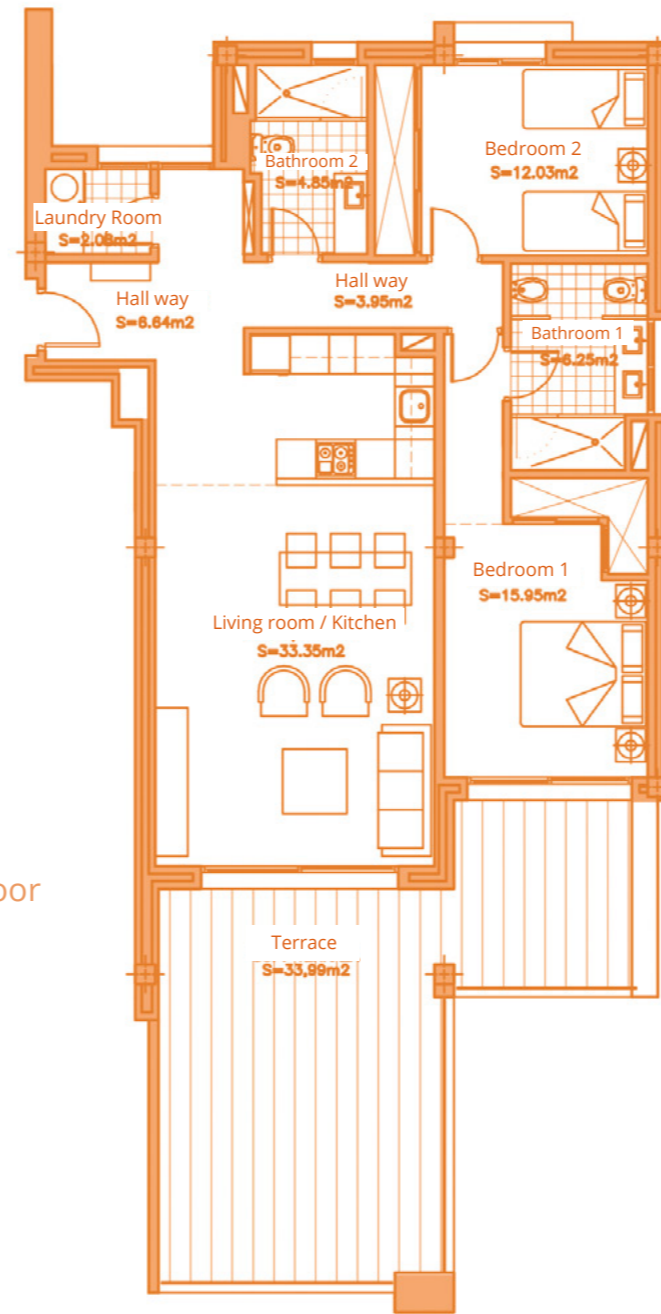
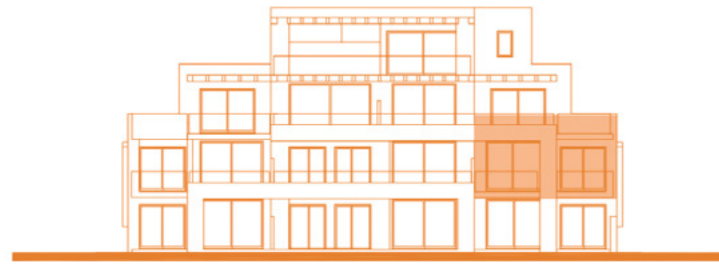




APARTMENT 813
2 BEDROOMS
BLOCK 8, TYPE B. FIRST FLOOR



BLOCK B



First floor



SURFACES	
Surface of constructed area	101,90 m ²
Surface of communal area	10,89 m ²
Surface of terrace area	33,99 m ²
TOTAL SURFACE	146,78 m²
Surface of utilised area	85,10 m ²

Information given is subject to modification for technical, construction or legal reasons





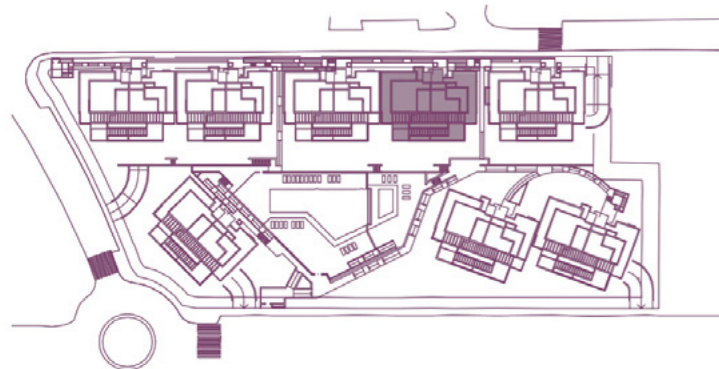
APARTMENTS

3 BEDROOMS

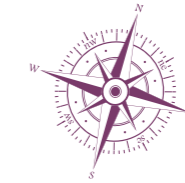
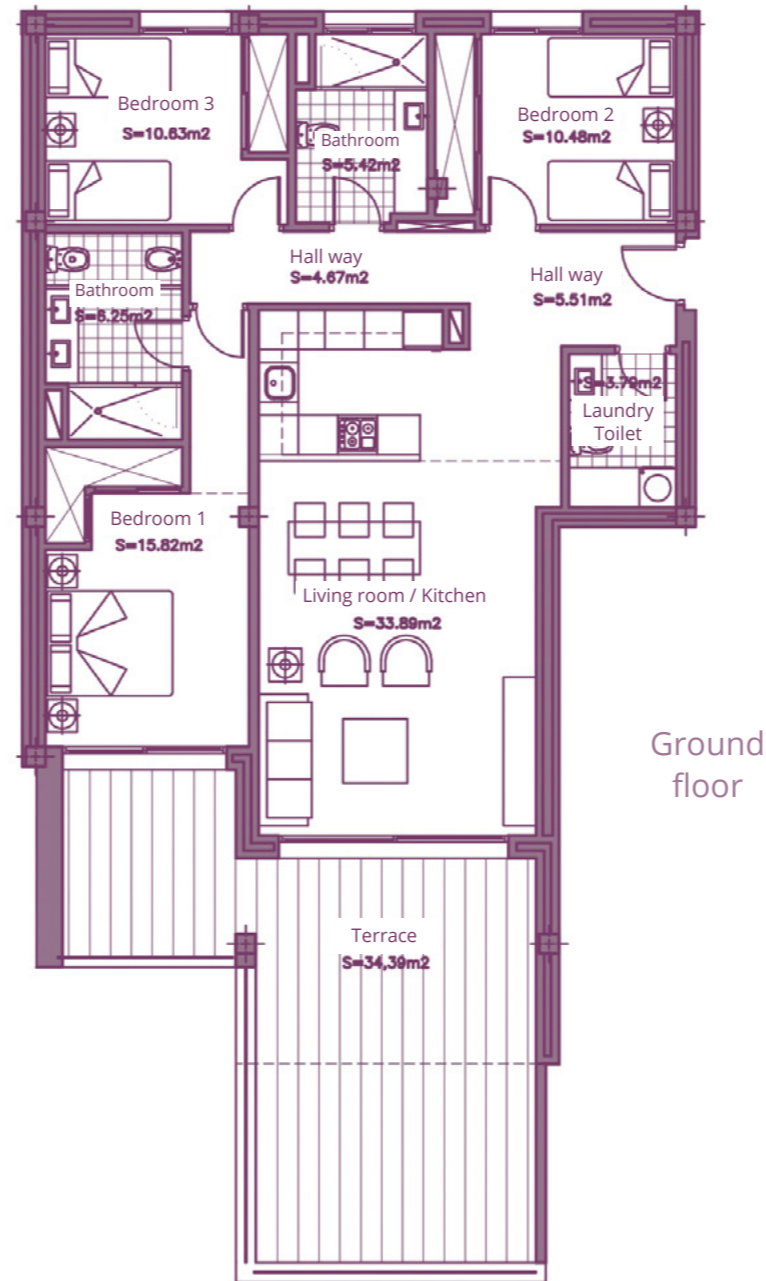




APARTMENT 211
3 BEDROOMS
BLOCK 2, TYPE B. GROUND FLOOR

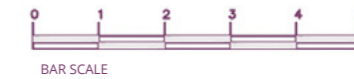


BLOCK B



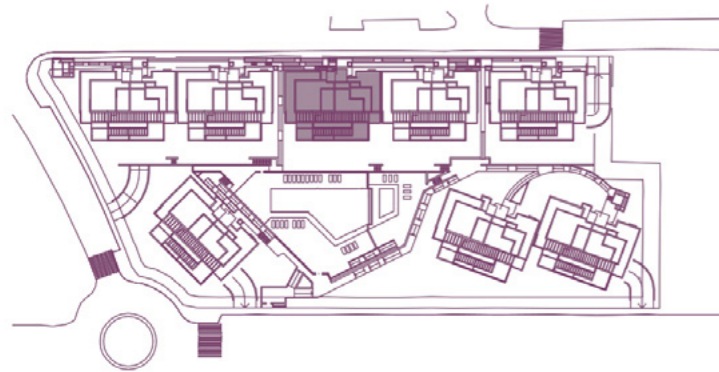
SURFACES	
Surface of constructed area	113,92 m ²
Surface of communal area	12,18 m ²
Surface of terrace area	34,39 m ²
TOTAL SURFACE	162,49 m²
Surface of utilised area	96,46 m ²

Information given is subject to modification for technical, construction or legal reasons

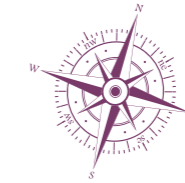
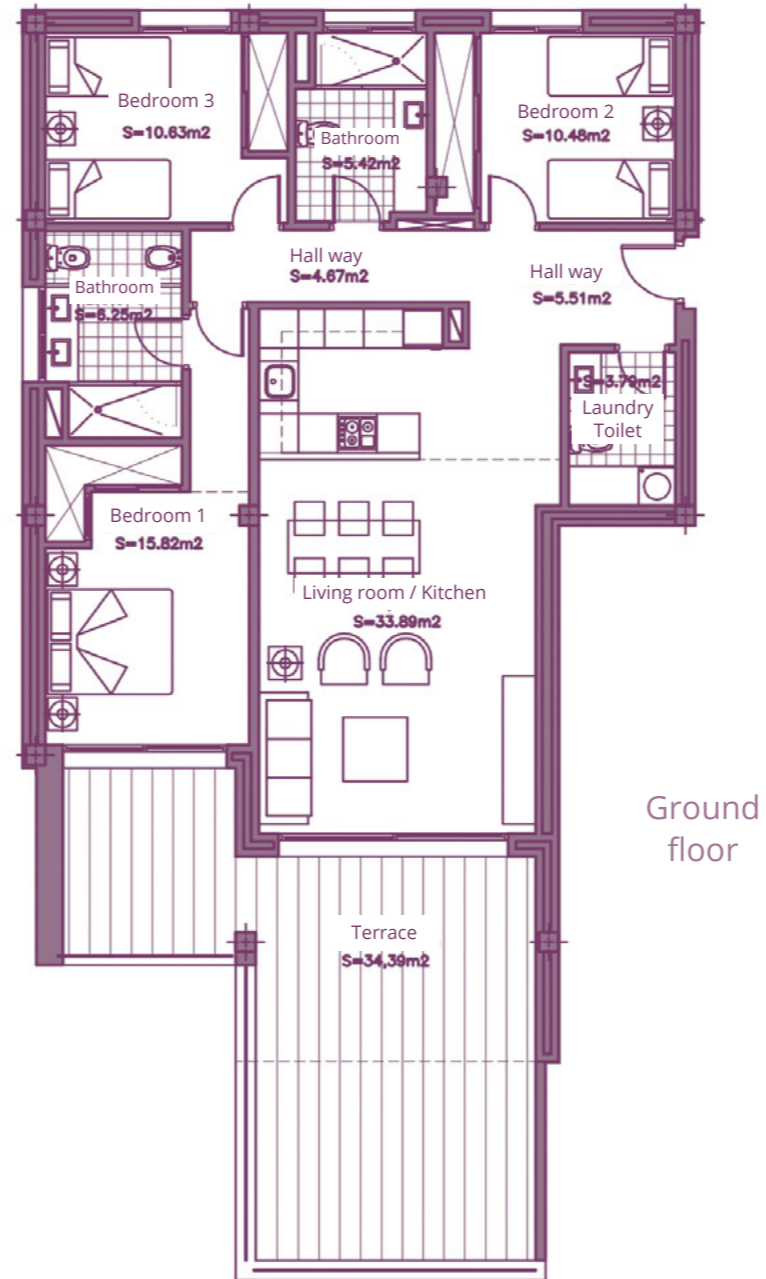




APARTMENT 311
3 BEDROOMS
BLOCK 3, TYPE C. GROUND FLOOR

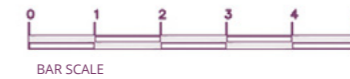


BLOCK C



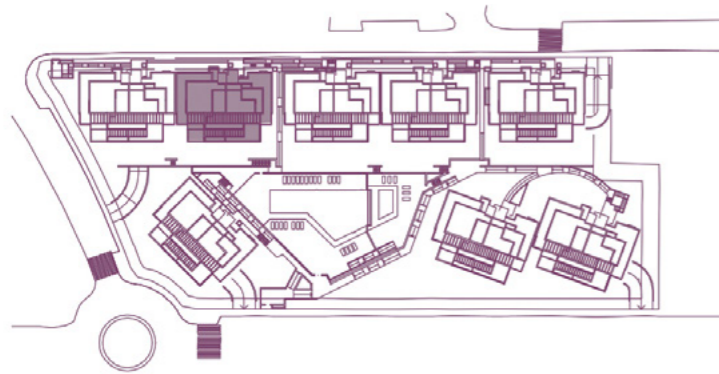
SURFACES	
Surface of constructed area	113,92 m ²
Surface of communal area	12,18 m ²
Surface of terrace area	34,39 m ²
TOTAL SURFACE	162,49 m²
Surface of utilised area	96,46 m ²

Information given is subject to modification for technical, construction or legal reasons

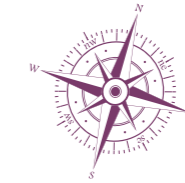
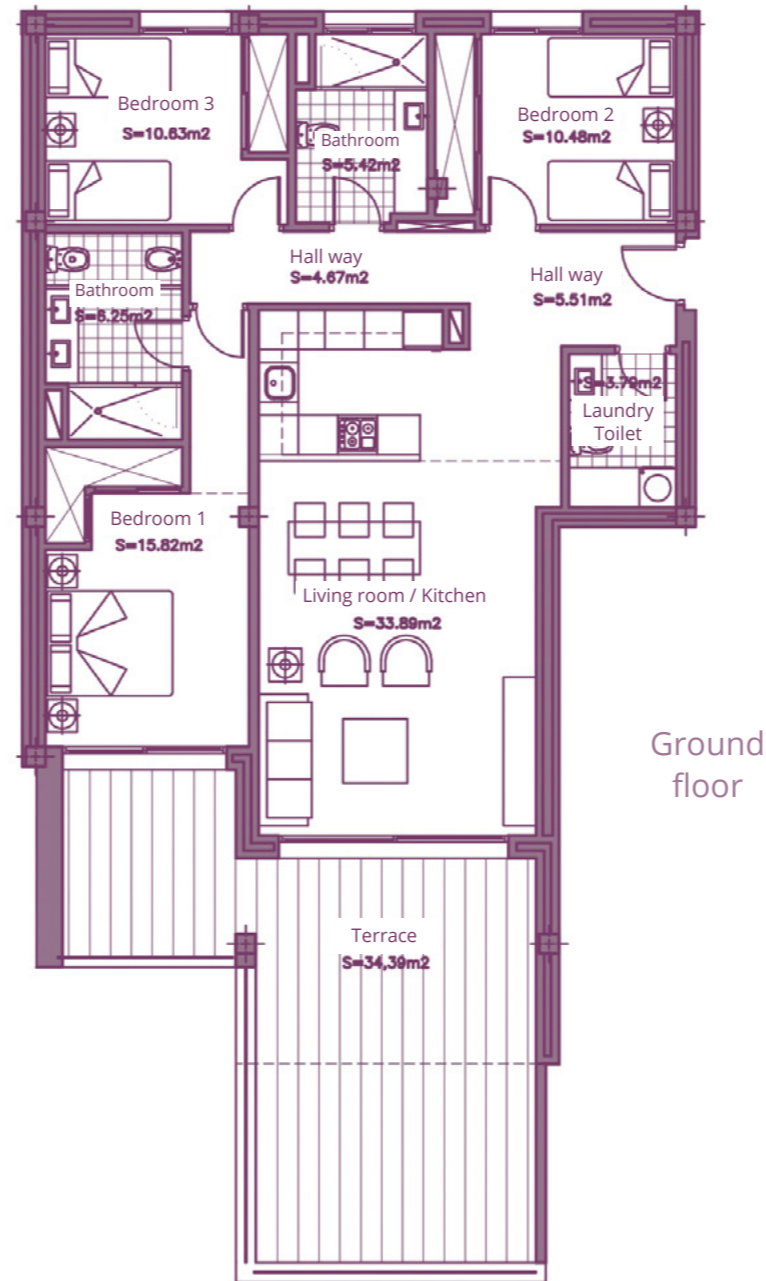




APARTMENT 411
3 BEDROOMS
BLOCK 4, TYPE B. GROUND FLOOR

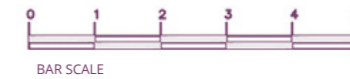


BLOCK B



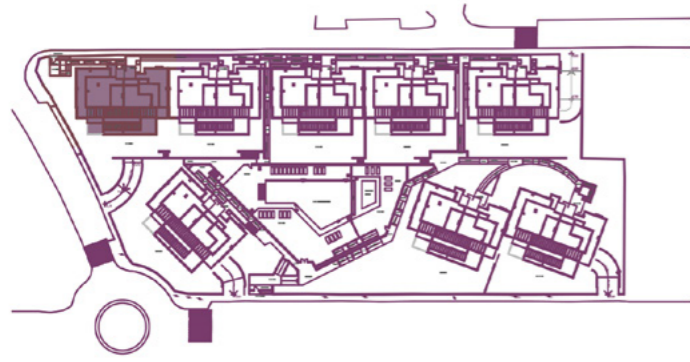
SURFACES	
Surface of constructed area	113,92 m ²
Surface of communal area	12,18 m ²
Surface of terrace area	34,39 m ²
TOTAL SURFACE	162,49 m²
Surface of utilised area	96,46 m ²

Information given is subject to modification for technical, construction or legal reasons

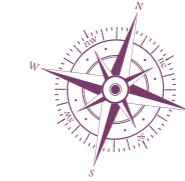
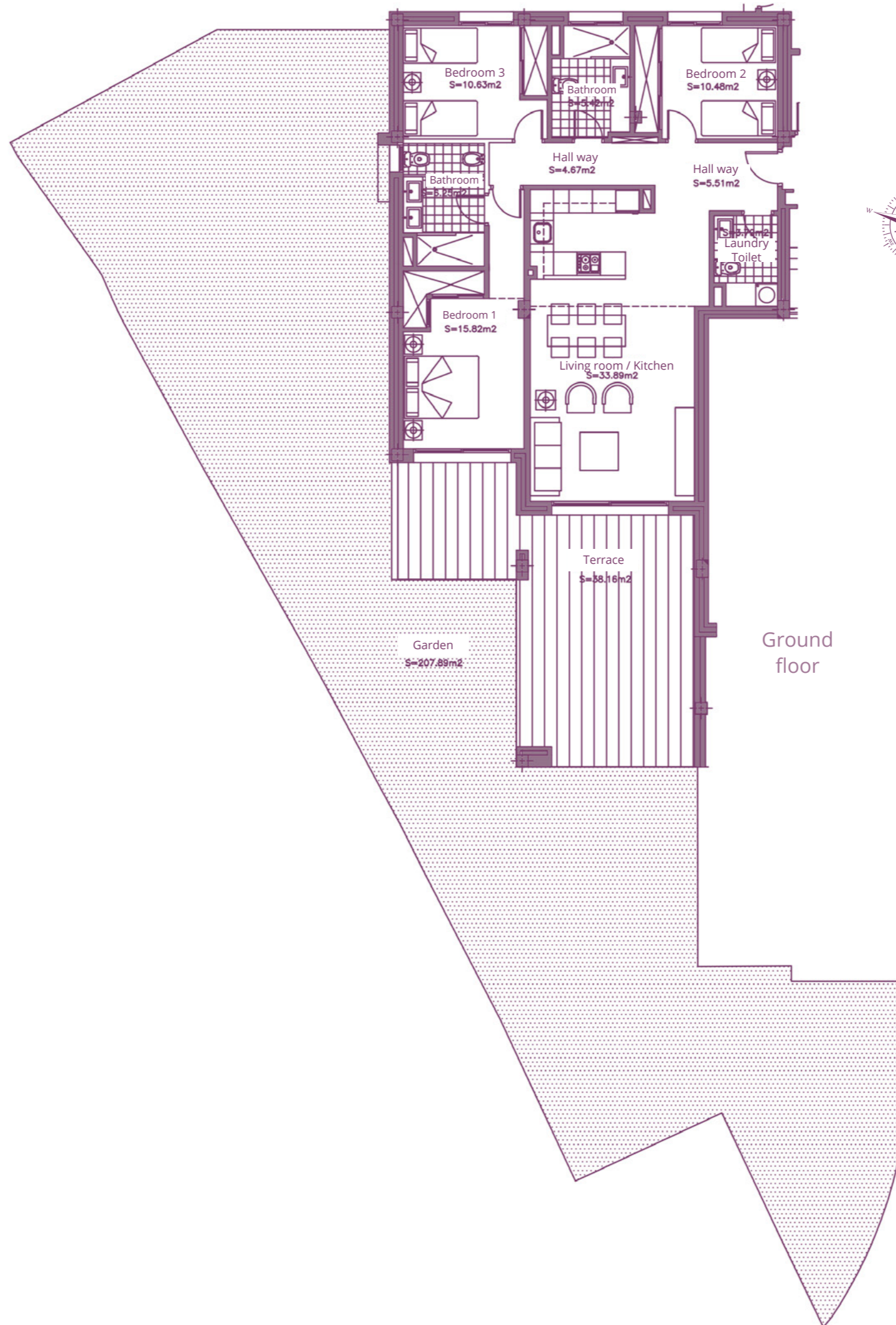




APARTMENT 501
3 BEDROOMS
BLOCK 5, TYPE C. GROUND FLOOR

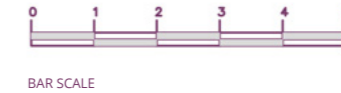


BLOCK C



SURFACES	
Surface of constructed area	113,92 m ²
Surface of communal area	12,18 m ²
Surface of terrace area	38,16 m ²
TOTAL SURFACE	164,26 m²
Surface of utilised area	96,46 m ²
Garden surface	207,89 m ²

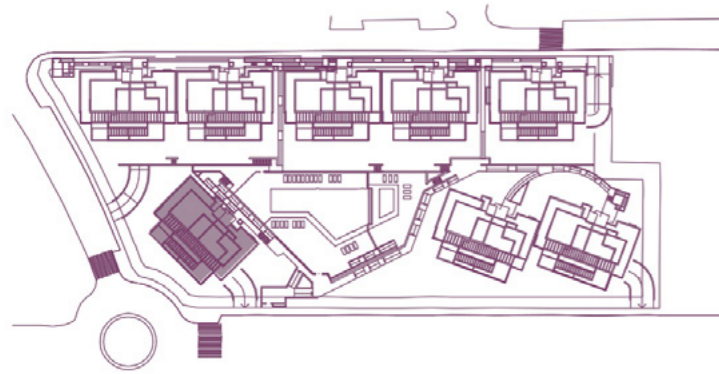
Information given is subject to modification for technical, construction or legal reasons



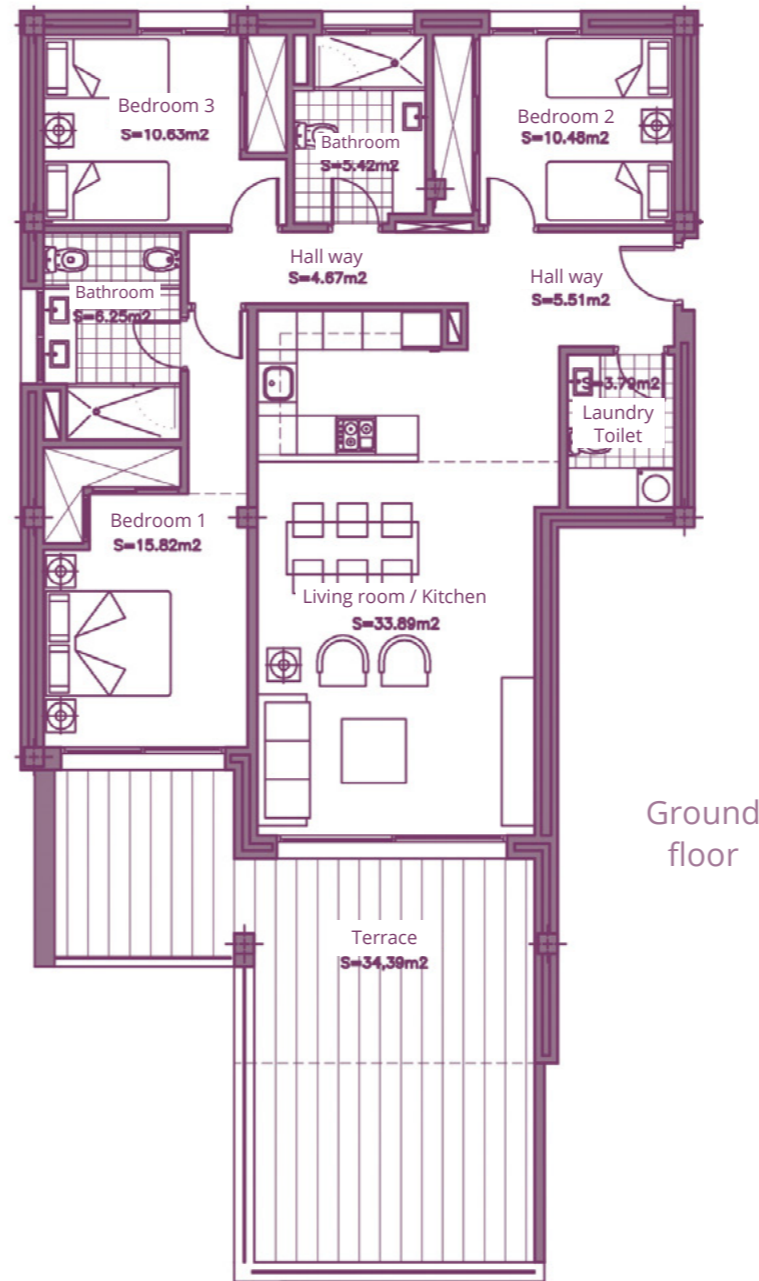
BAR SCALE



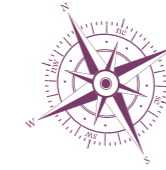
APARTMENT 611
3 BEDROOMS
BLOCK 6, TYPE A. GROUND FLOOR



BLOCK A



Ground floor



SURFACES	
Surface of constructed area	113,92 m ²
Surface of communal area	12,18 m ²
Surface of terrace area	34,39 m ²
TOTAL SURFACE	162,49 m²
Surface of utilised area	96,46 m ²

Information given is subject to modification for technical, construction or legal reasons



BAR SCALE



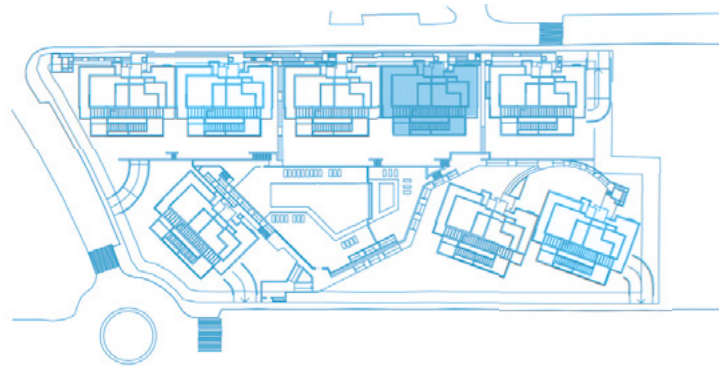
PENTHOUSE

2 BEDROOMS





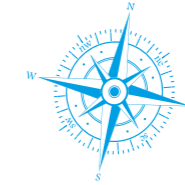
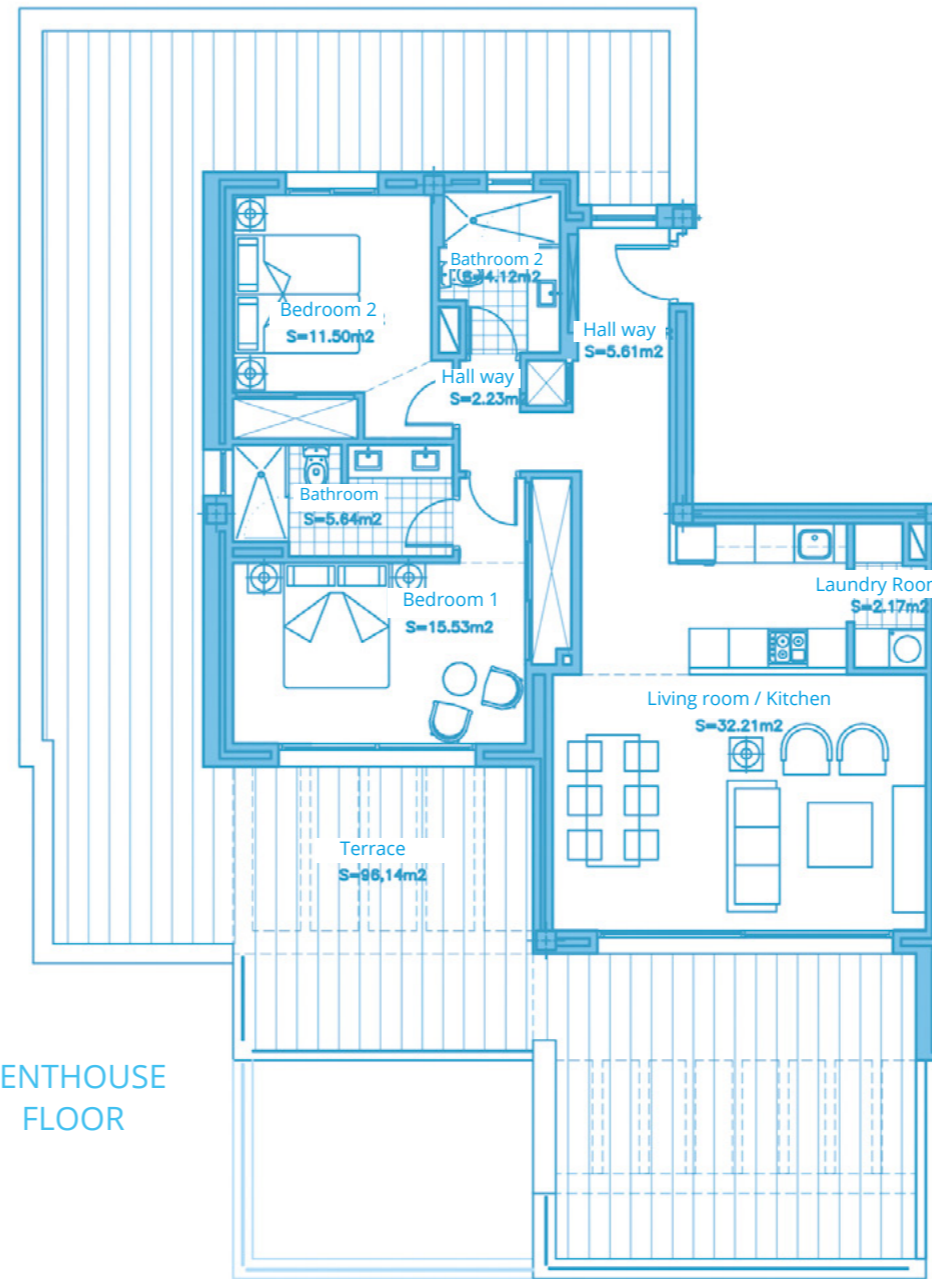
APARTMENT 221
2 BEDROOMS
BLOCK 2, TYPE B. PENTHOUSE FLOOR



BLOCK B



PENTHOUSE FLOOR



SURFACES

Surface of constructed area	94,82 m ²
Surface of communal area	10,14 m ²
Surface of terrace area	96,14 m ²

TOTAL SURFACE

201,10 m²

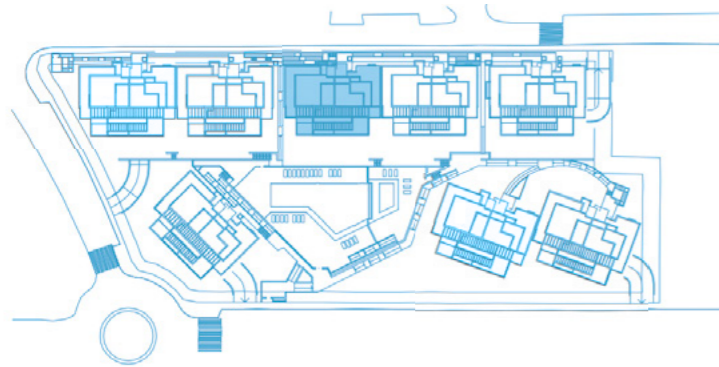
Surface of utilised area 79,01 m²

Information given is subject to modification for technical, construction or legal reasons

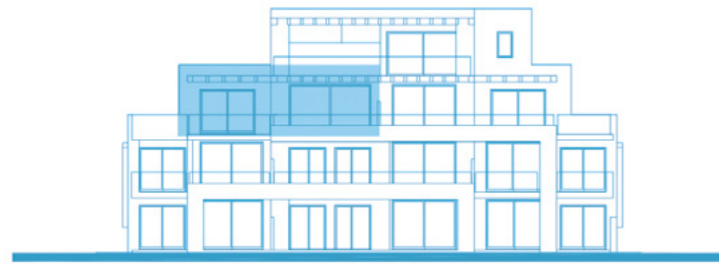




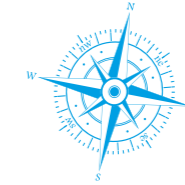
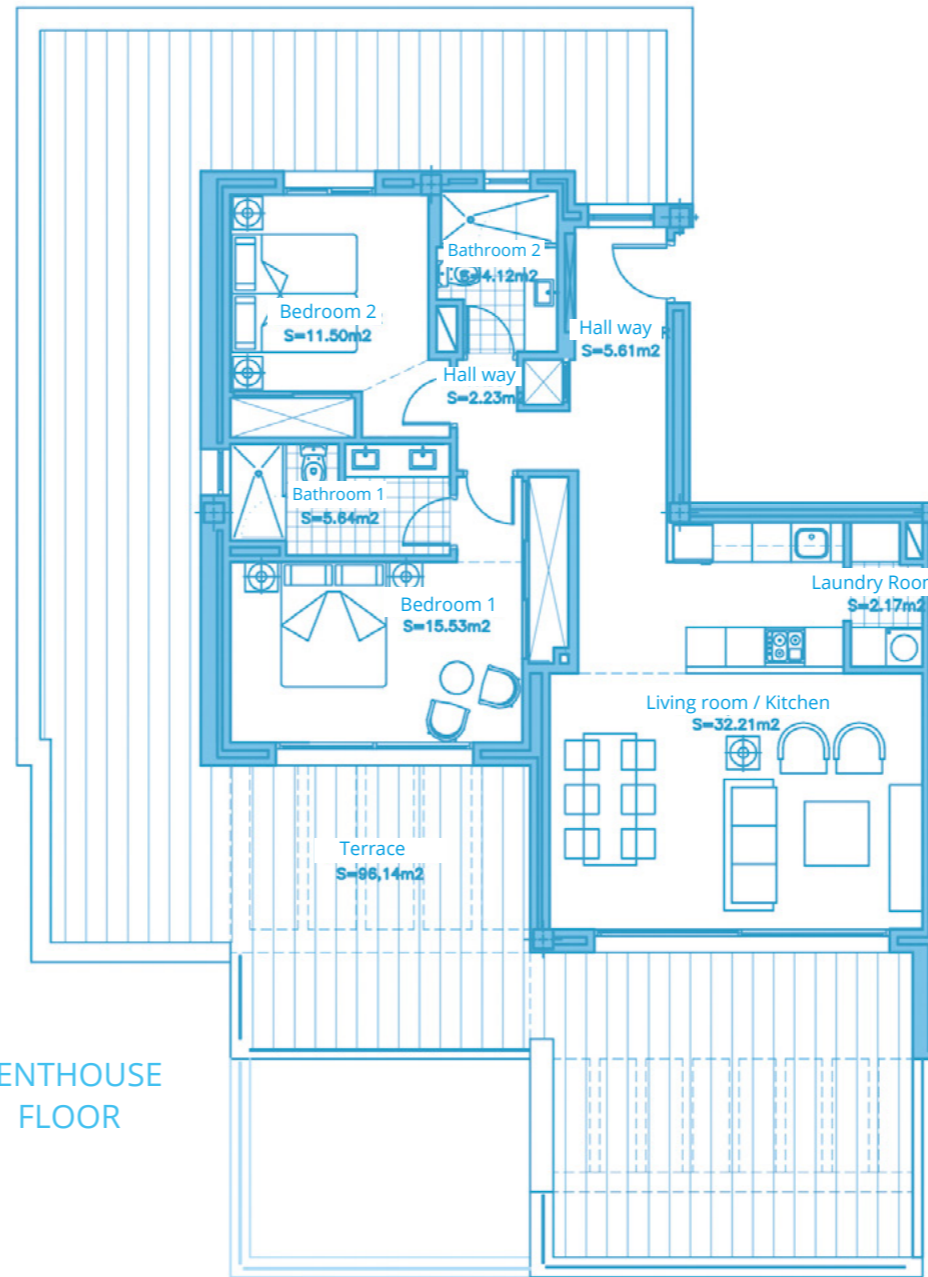
APARTMENT 321
2 BEDROOMS
BLOCK 3, TYPE C. PENTHOUSE FLOOR



BLOCK C



PENTHOUSE FLOOR



SURFACES

Surface of constructed area	94,82 m ²
Surface of communal area	10,14 m ²
Surface of terrace area	96,14 m ²

TOTAL SURFACE

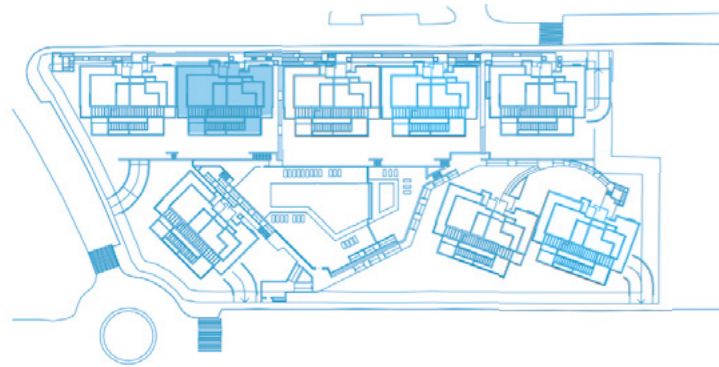
Surface of utilised area	79,01 m ²
--------------------------	----------------------

Information given is subject to modification for technical, construction or legal reasons

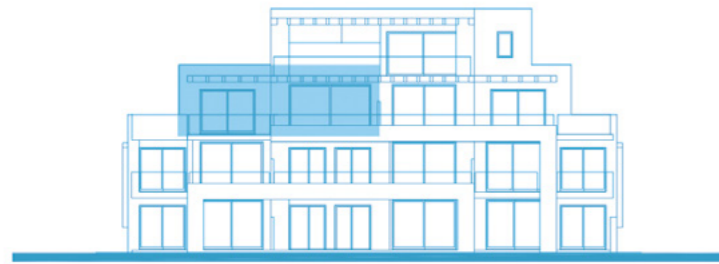




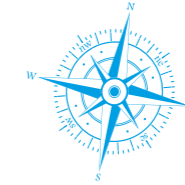
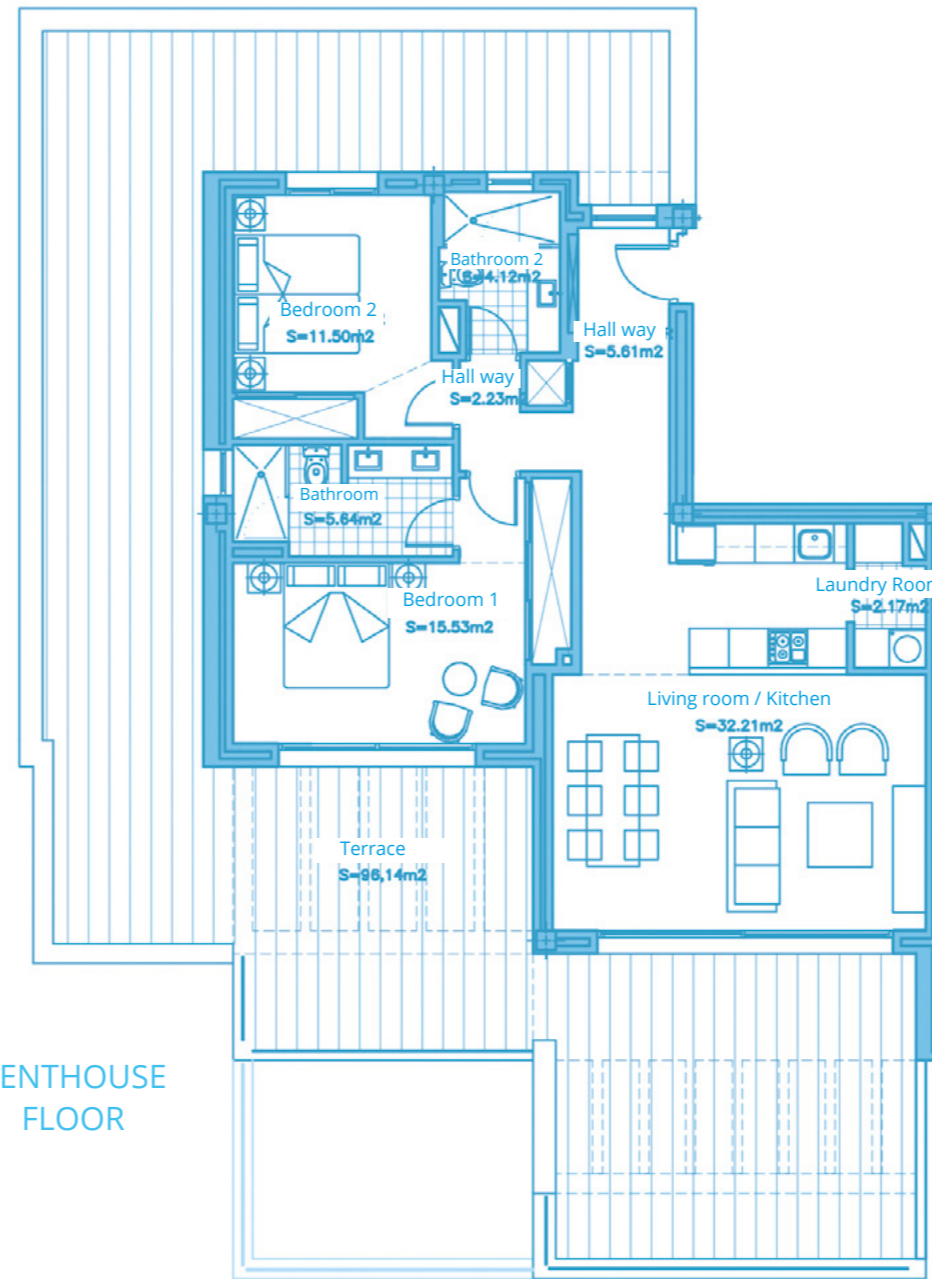
APARTMENT 421
2 BEDROOMS
BLOCK 4, TYPE B. PENTHOUSE FLOOR



BLOCK B



PENTHOUSE FLOOR



SURFACES

Surface of constructed area	94,82 m ²
Surface of communal area	10,14 m ²
Surface of terrace area	96,14 m ²

TOTAL SURFACE

201,10 m²

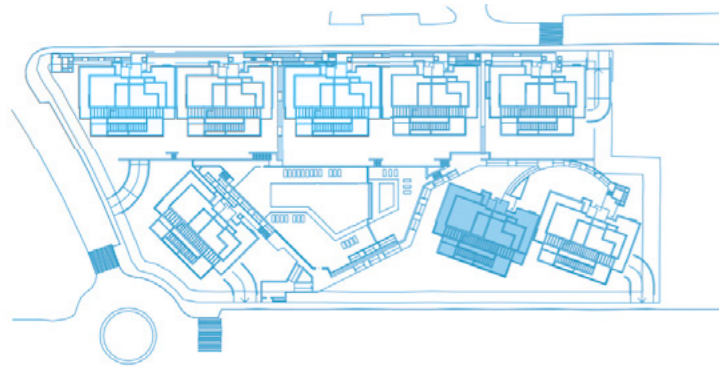
Surface of utilised area 79,01 m²

Information given is subject to modification for technical, construction or legal reasons





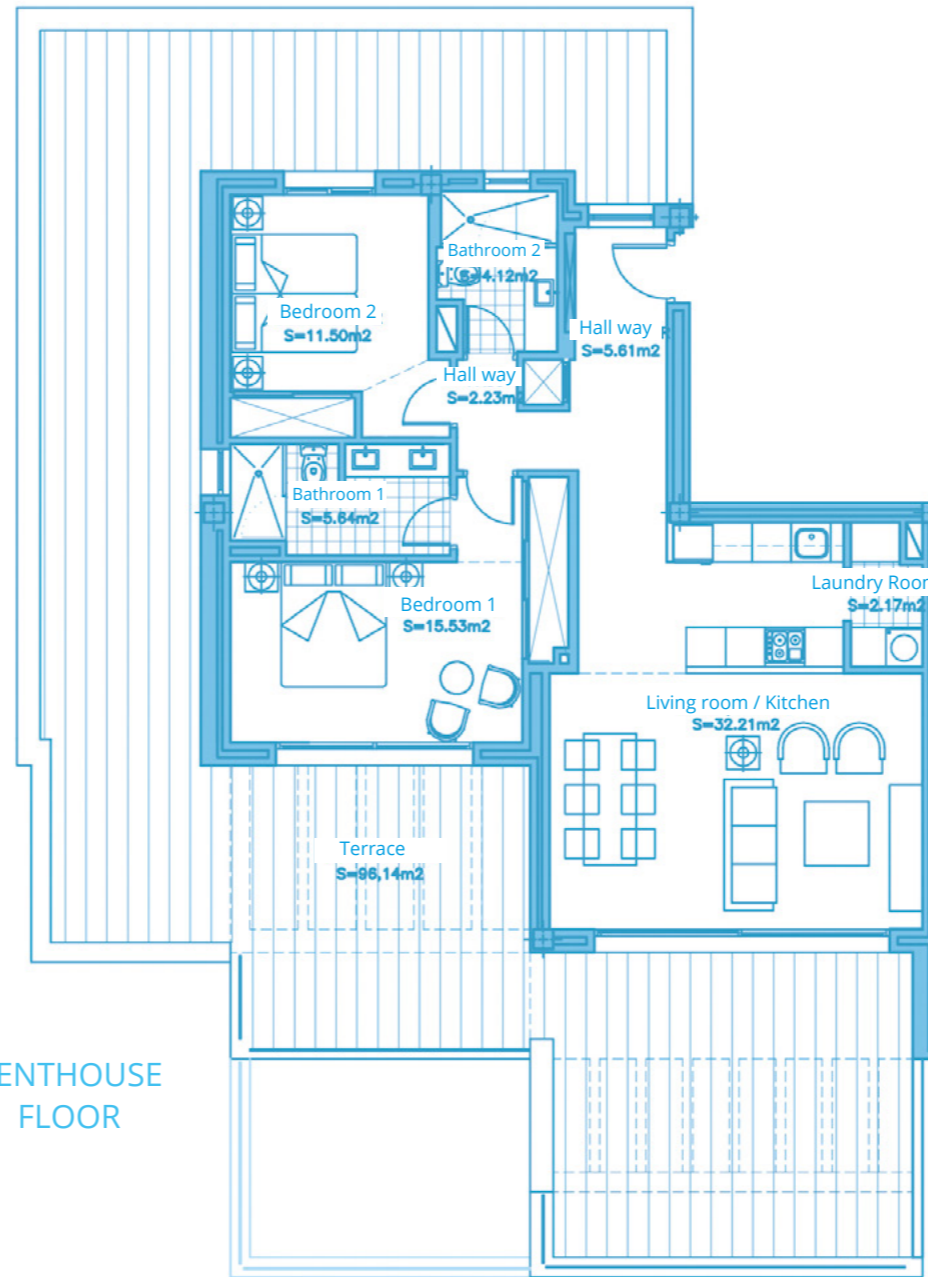
APARTMENT 721
2 BEDROOMS
BLOCK 7, TYPE C. PENTHOUSE FLOOR



BLOCK C



PENTHOUSE FLOOR



SURFACES

Surface of constructed area	94,82 m ²
Surface of communal area	10,14 m ²
Surface of terrace area	96,14 m ²

TOTAL SURFACE

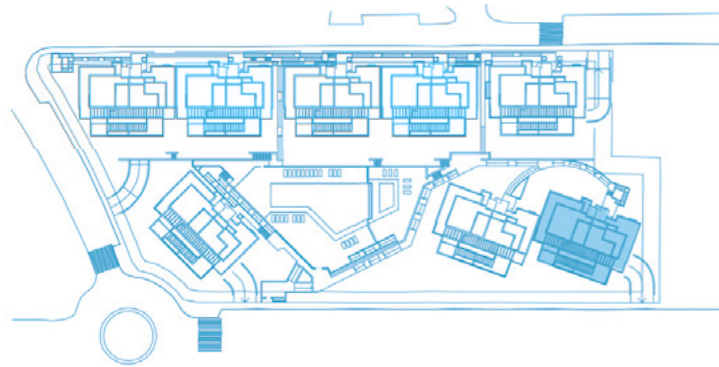
Surface of utilised area	79,01 m ²
--------------------------	----------------------

Information given is subject to modification for technical, construction or legal reasons

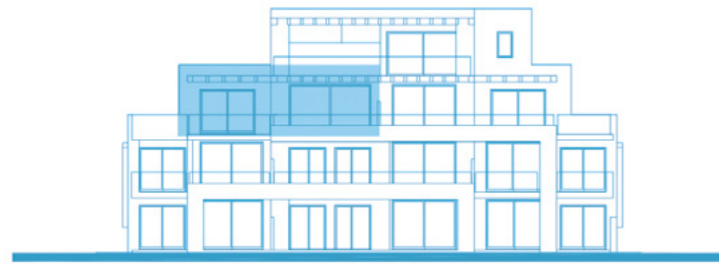




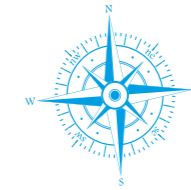
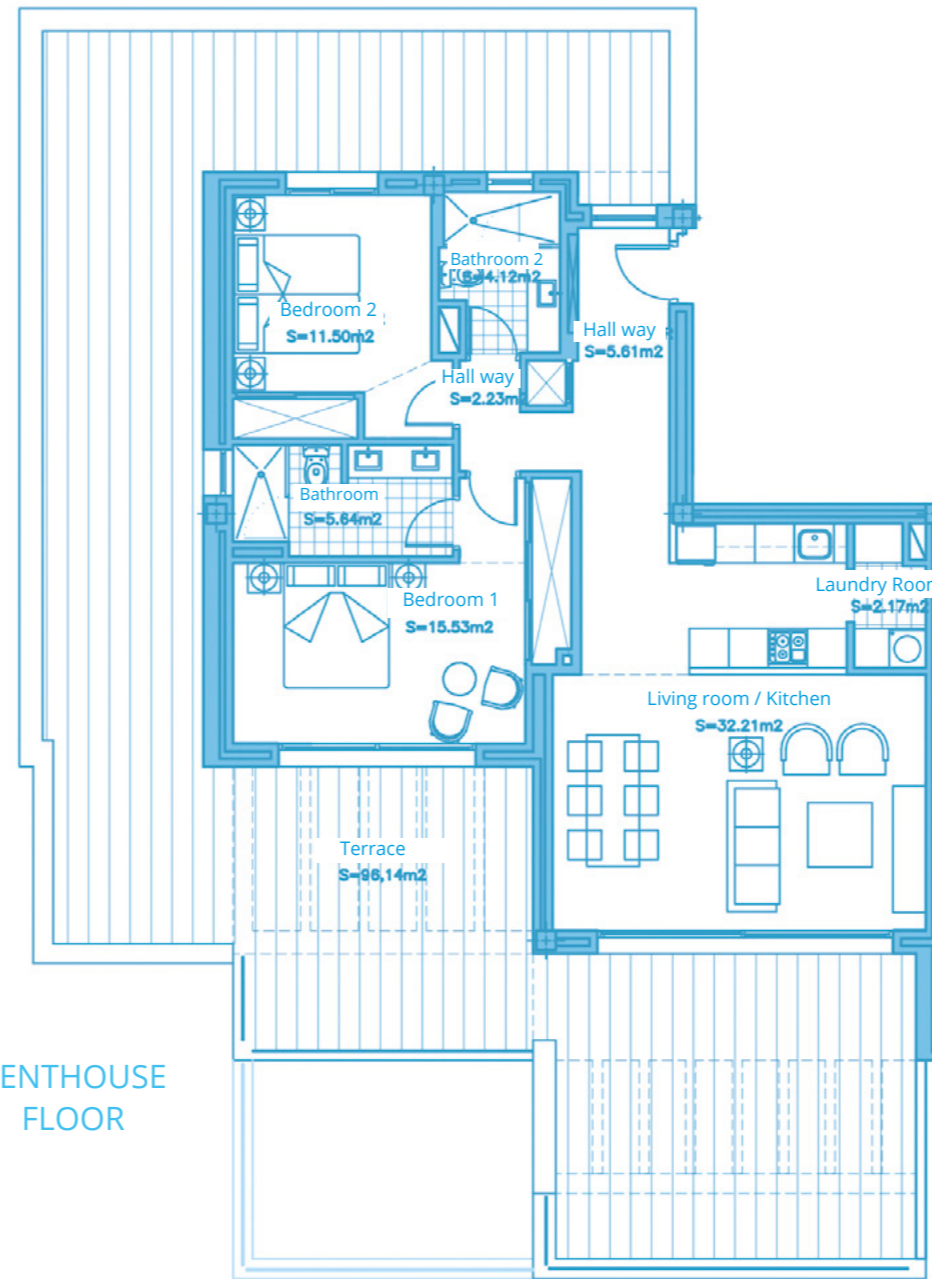
APARTMENT 821
2 BEDROOMS
BLOCK 8, TYPE B. PENTHOUSE FLOOR



BLOCK B



PENTHOUSE FLOOR



SURFACES

Surface of constructed area	94,82 m ²
Surface of communal area	10,14 m ²
Surface of terrace area	96,14 m ²

TOTAL SURFACE

201,10 m²

Surface of utilised area 79,01 m²

Information given is subject to modification for technical, construction or legal reasons





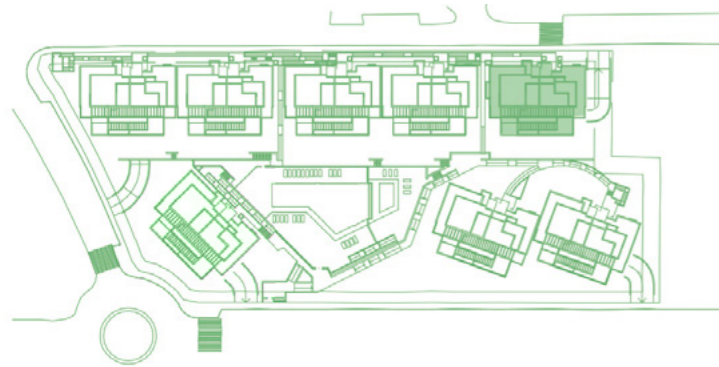
PENTHOUSE

3 BEDROOMS

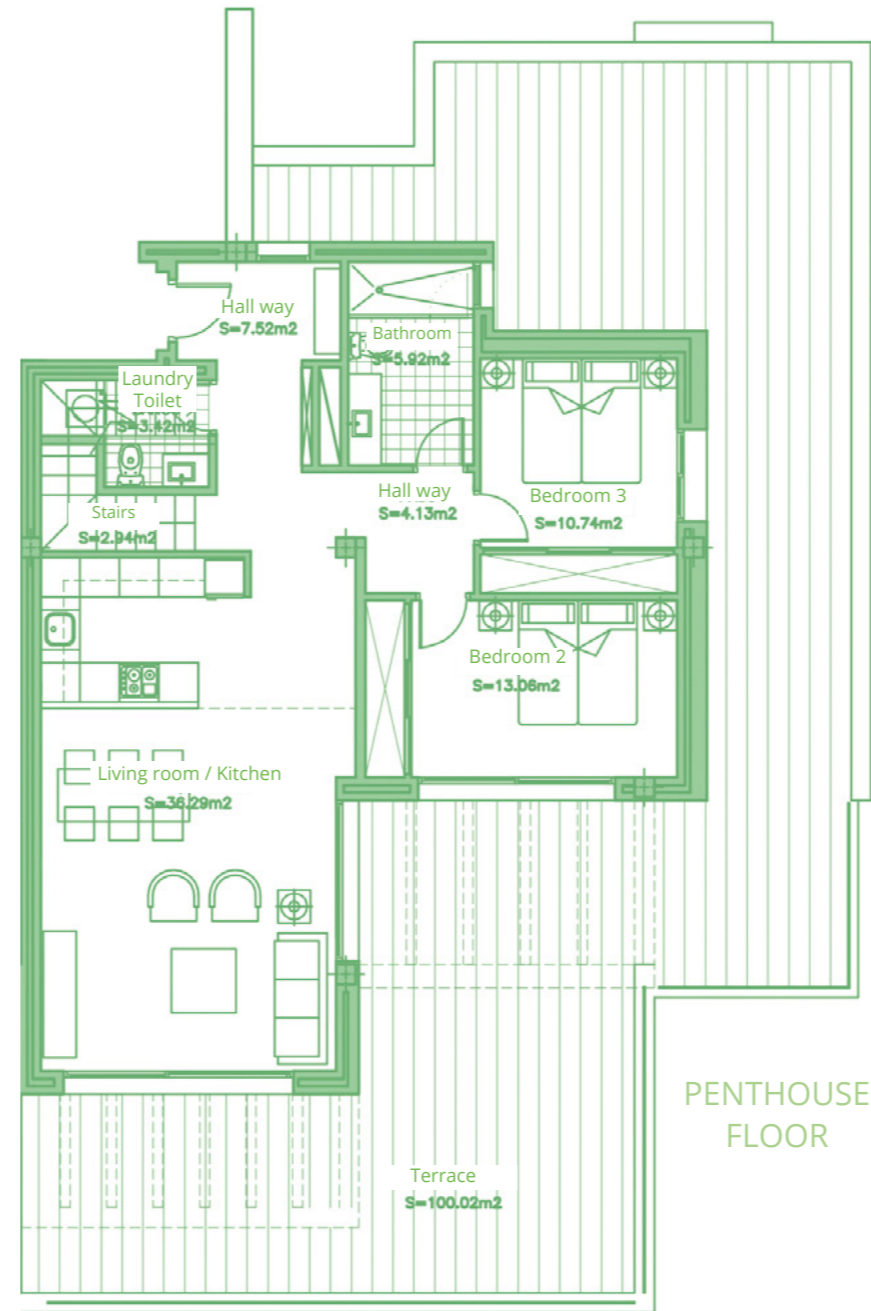
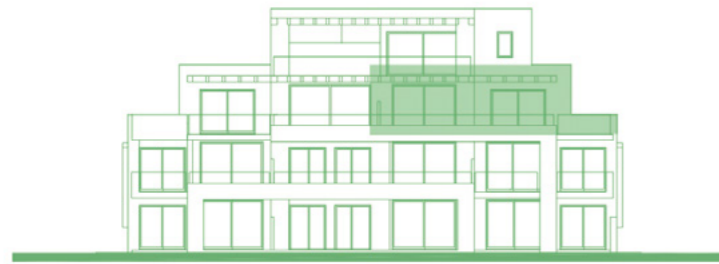




APARTMENT 122
3 BEDROOMS
BLOCK 1, TYPE A. PENTHOUSE FLOOR



BLOCK A



PENTHOUSE FLOOR



SURFACES

Surface of constructed area	142,93 m ²
Surface of communal area	15,28 m ²
Surface of terrace area	162,55 m ²

TOTAL SURFACE

320,76 m²

Surface of utilised area

116,48 m²

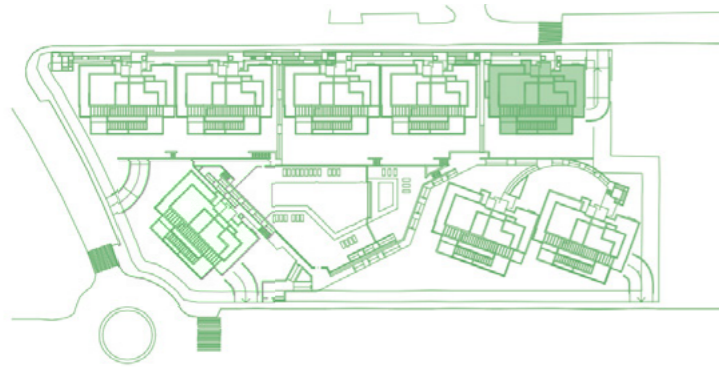
Information given is subject to modification for technical, construction or legal reasons



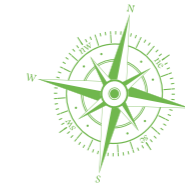
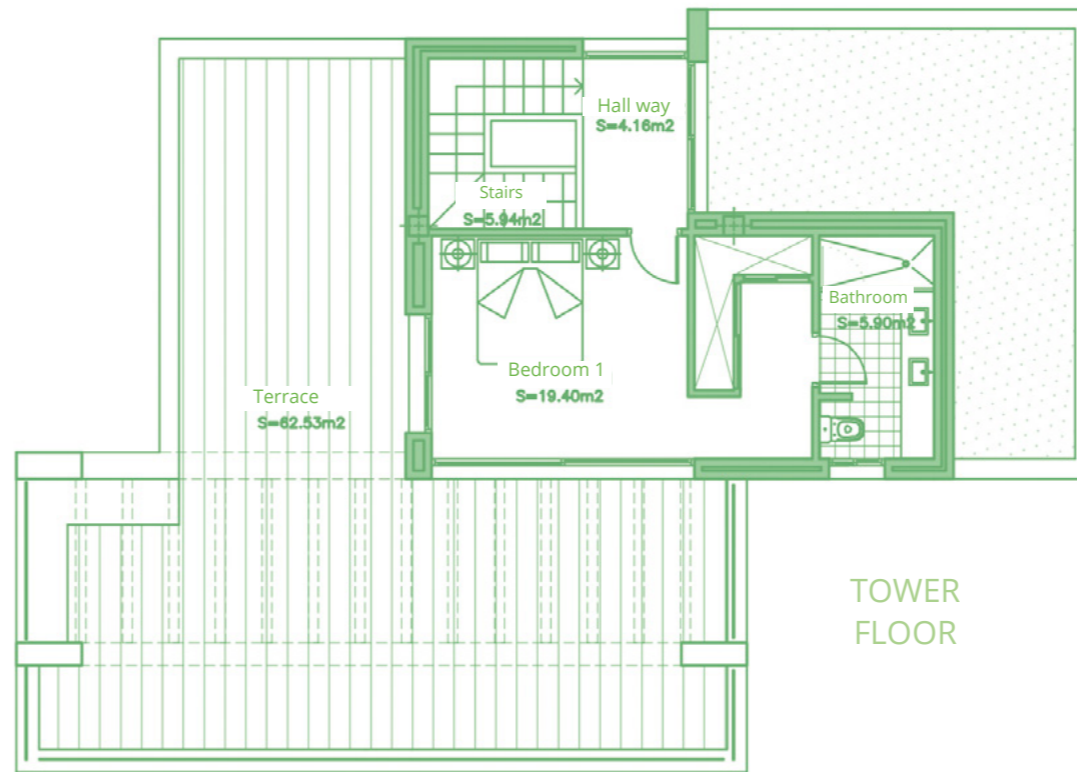
BAR SCALE



APARTMENT 122
3 BEDROOMS
BLOCK 1, TYPE A. TOWER FLOOR



BLOCK A



SURFACES

Surface of constructed area	142,93 m ²
Surface of communal area	15,28 m ²
Surface of terrace area	162,55 m ²

TOTAL SURFACE

320,76 m²

Surface of utilised area

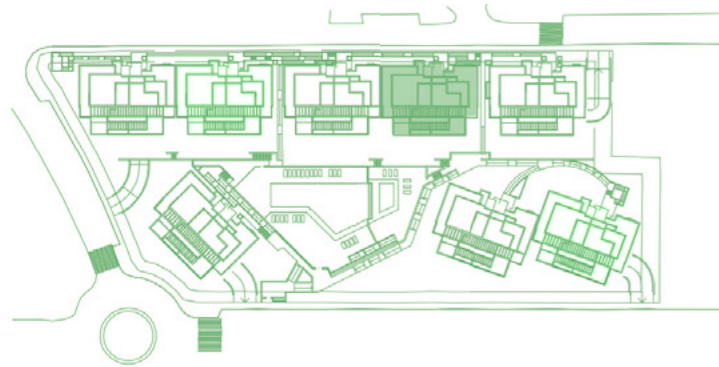
116,48 m²

Information given is subject to modification for technical, construction or legal reasons

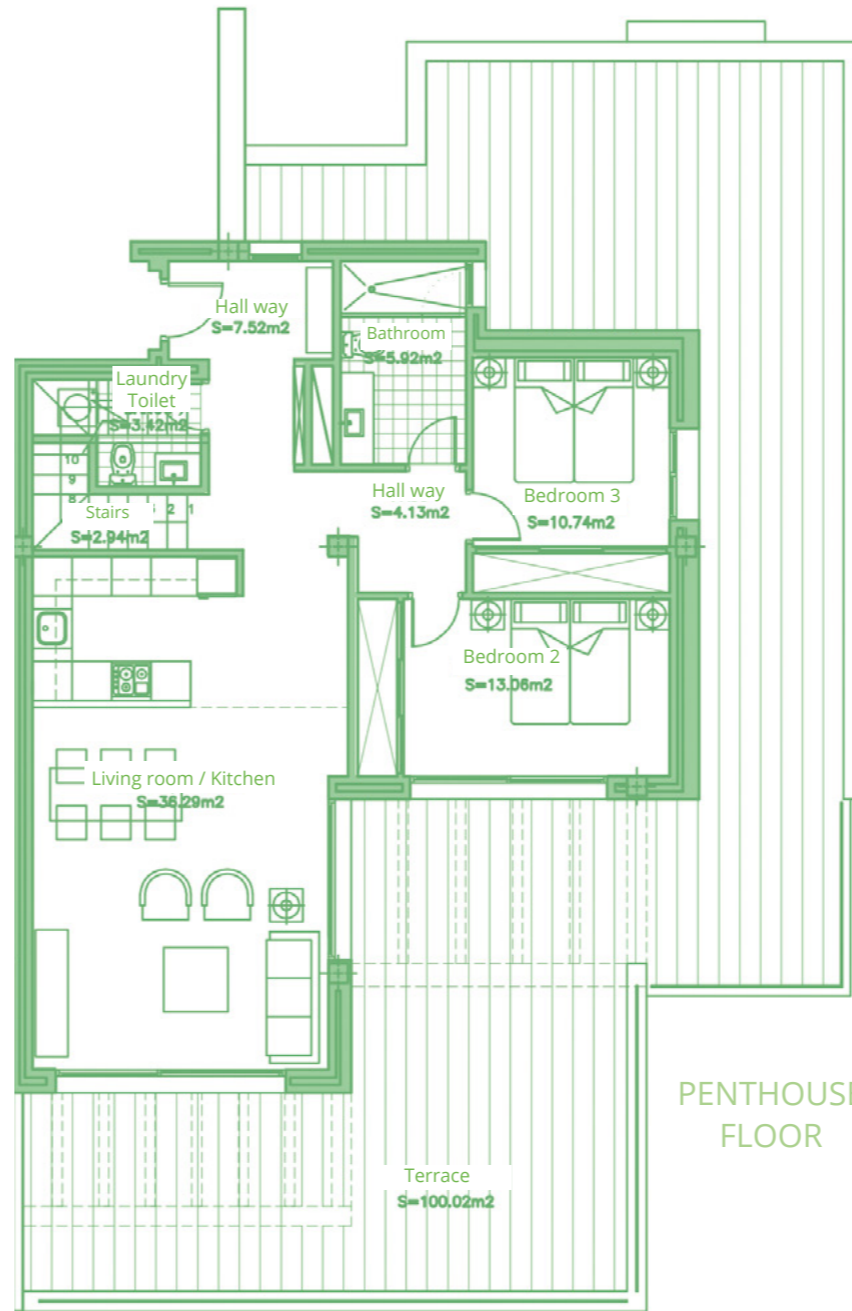
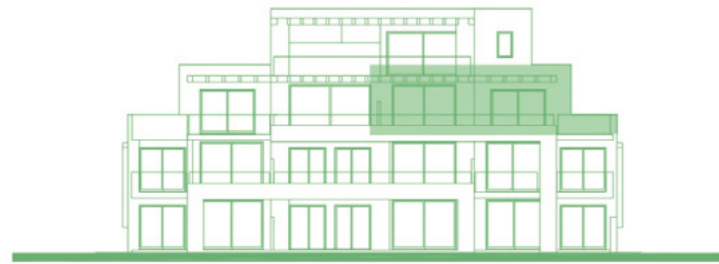




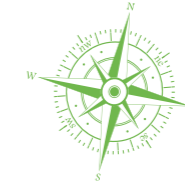
APARTMENT 222
3 BEDROOMS
BLOCK 2, TYPE B. PENTHOUSE FLOOR



BLOCK B



PENTHOUSE FLOOR



SURFACES	
Surface of constructed area	142,93 m ²
Surface of communal area	15,28 m ²
Surface of terrace area	162,55 m ²
TOTAL SURFACE	320,76 m²
Surface of utilised area	116,48 m ²

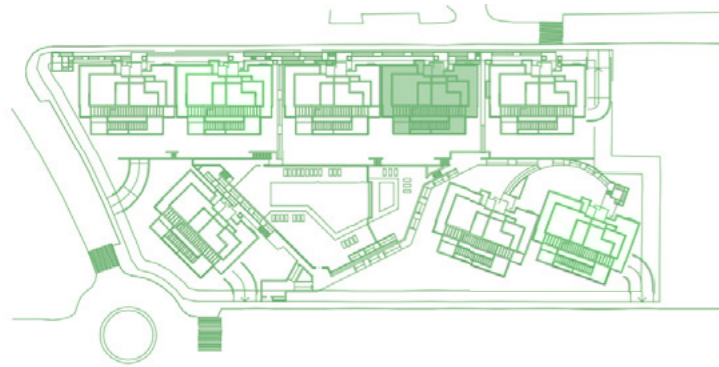
Information given is subject to modification for technical, construction or legal reasons



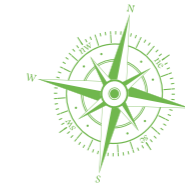
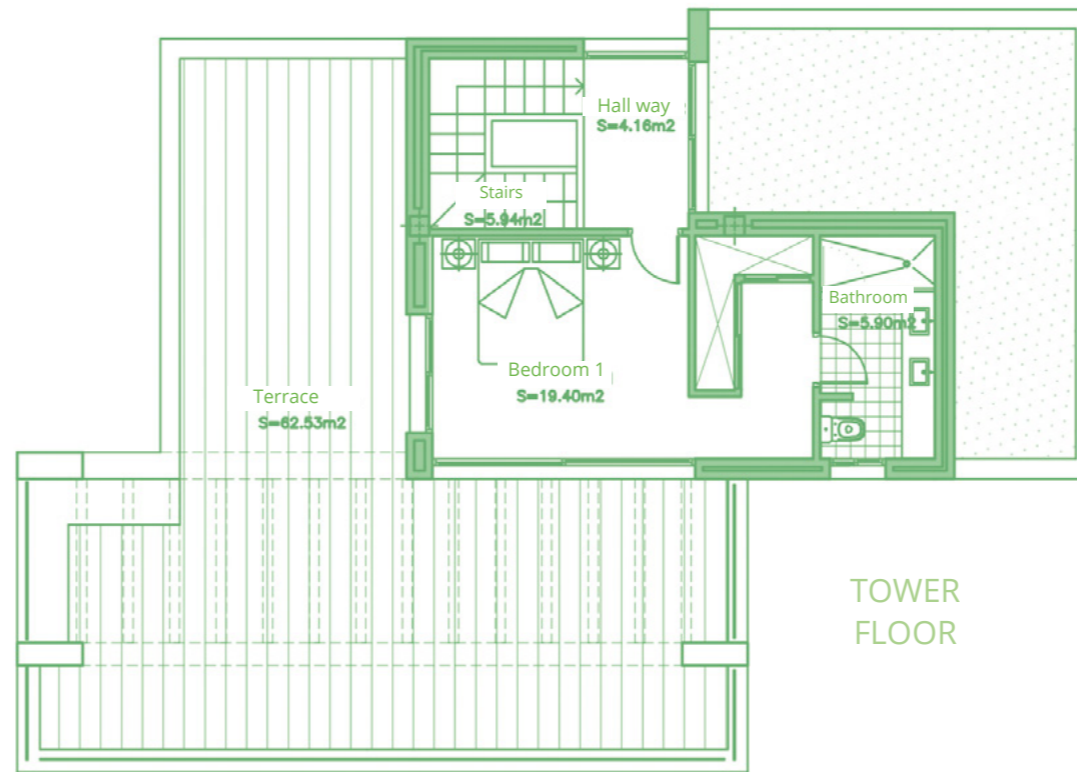
BAR SCALE



APARTMENT 222
3 BEDROOMS
BLOCK 2, TYPE B. TOWER FLOOR



BLOCK B



SURFACES

Surface of constructed area	142,93 m ²
Surface of communal area	15,28 m ²
Surface of terrace area	162,55 m ²

TOTAL SURFACE 320,76 m²

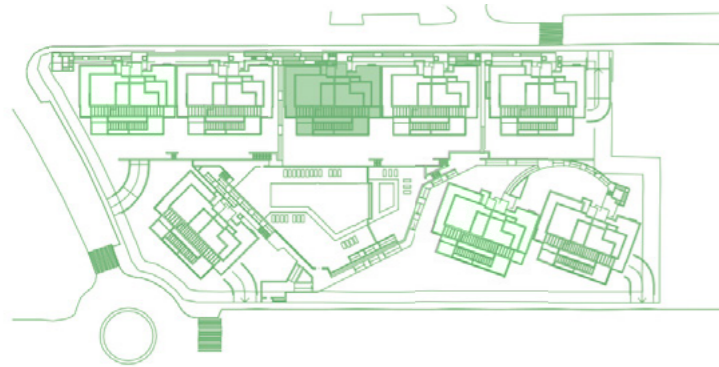
Surface of utilised area 116,48 m²

Information given is subject to modification for technical, construction or legal reasons

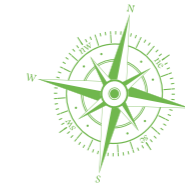
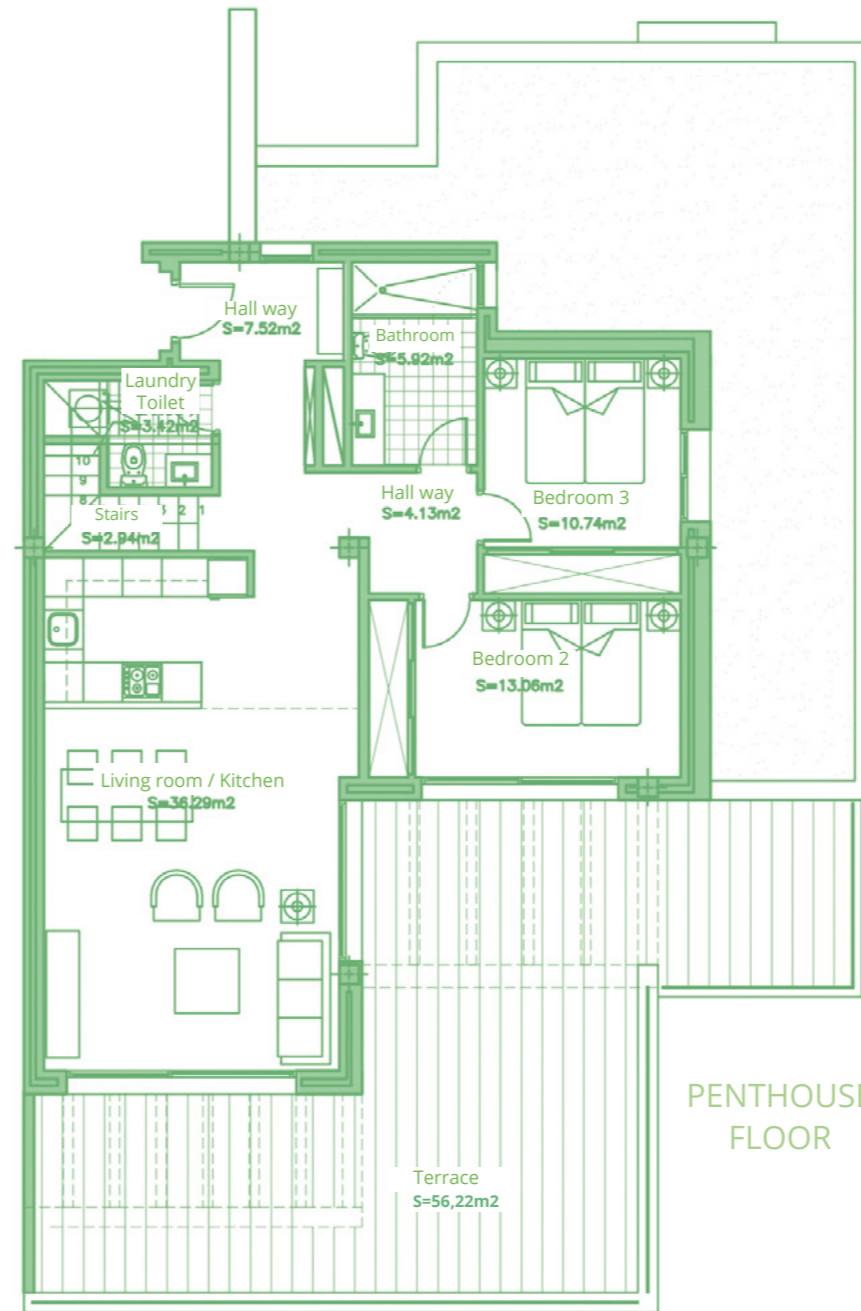
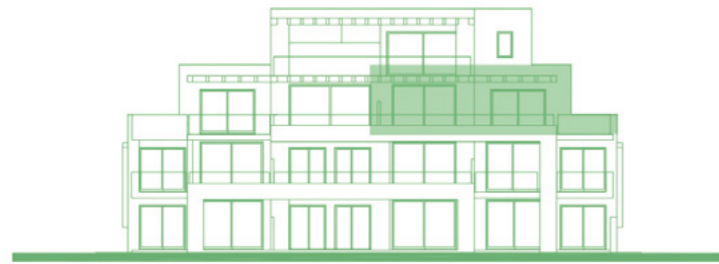




APARTMENT 322
3 BEDROOMS
BLOCK 3, TYPE C. PENTHOUSE FLOOR



BLOCK C



SURFACES

Surface of constructed area	142,93 m ²
Surface of communal area	15,28 m ²
Surface of terrace area	118,75 m ²

TOTAL SURFACE

276,96 m²

Surface of utilised area

116,48 m²

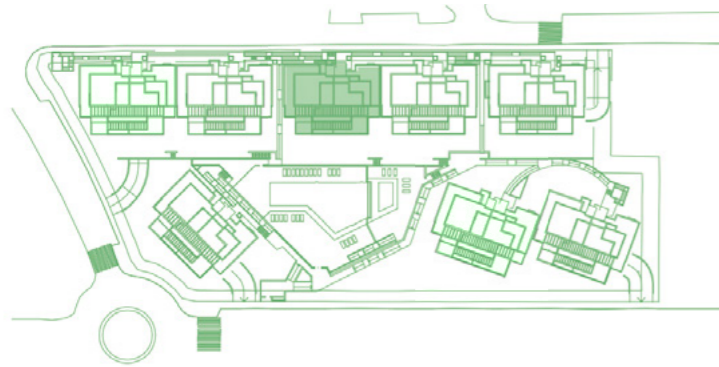
Information given is subject to modification for technical, construction or legal reasons



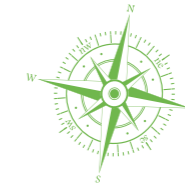
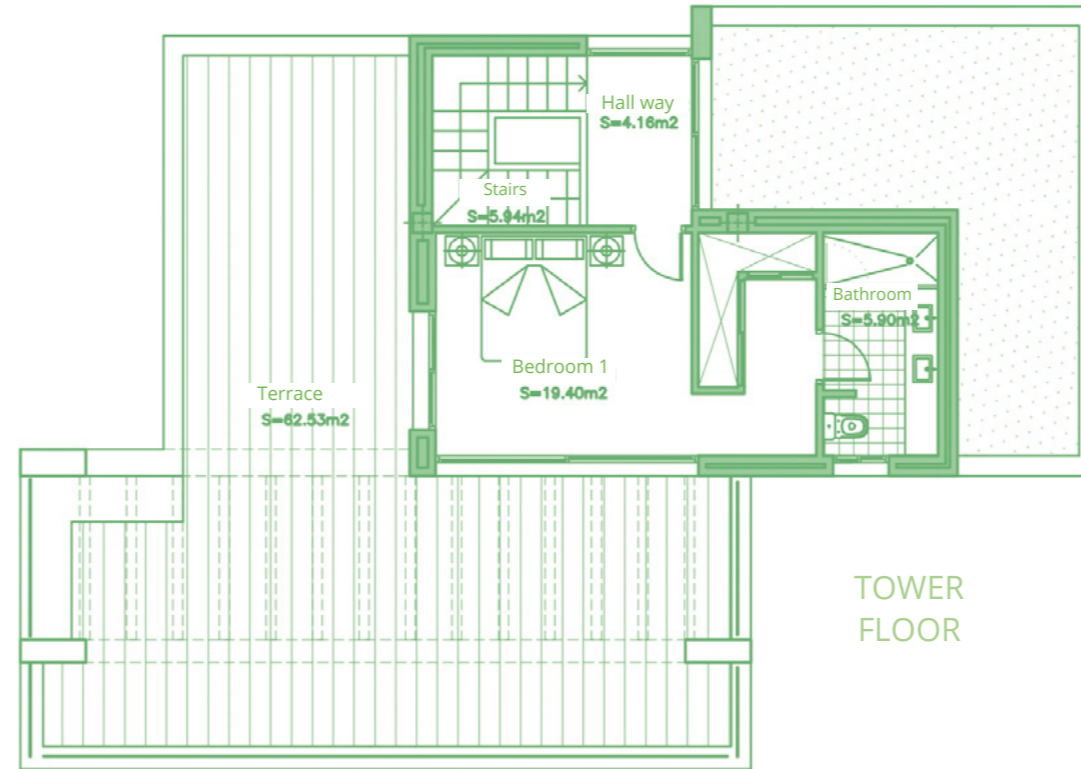
BAR SCALE



APARTMENT 322
3 BEDROOMS
BLOCK 3, TYPE C. TOWER FLOOR



BLOCK C



SURFACES

Surface of constructed area	142,93 m ²
Surface of communal area	15,28 m ²
Surface of terrace area	118,75 m ²

TOTAL SURFACE

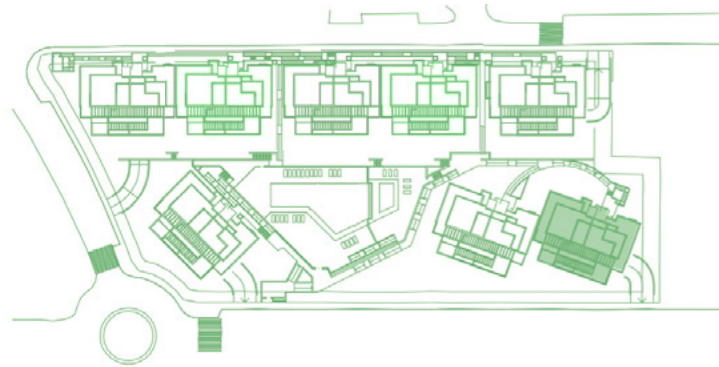
Surface of utilised area	116,48 m ²
--------------------------	-----------------------

Information given is subject to modification for technical, construction or legal reasons

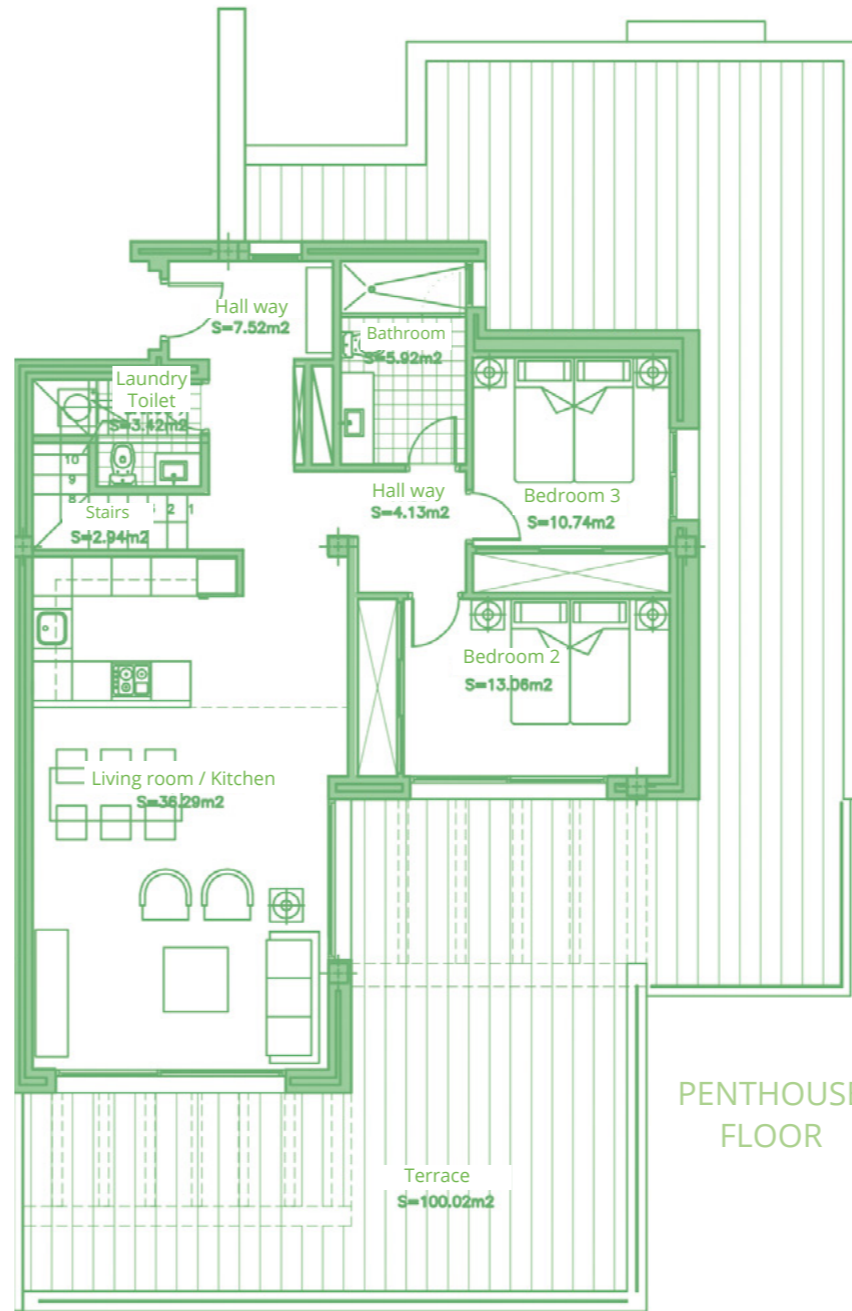
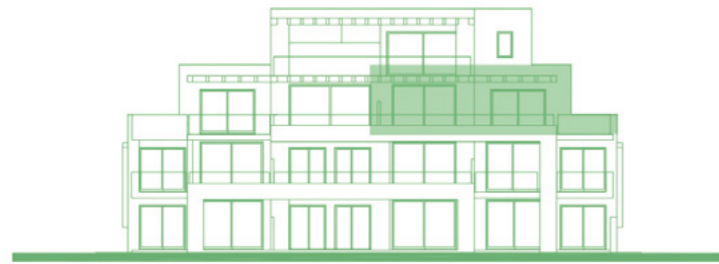




APARTMENT 822
3 BEDROOMS
BLOCK 8, TYPE B. PENTHOUSE FLOOR



BLOCK B



PENTHOUSE FLOOR



SURFACES

Surface of constructed area	142,93 m ²
Surface of communal area	15,28 m ²
Surface of terrace area	162,55 m ²

TOTAL SURFACE

320,76 m²

Surface of utilised area

116,48 m²

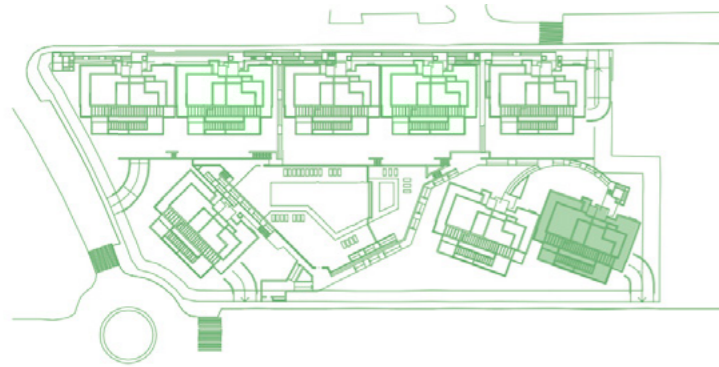
Information given is subject to modification for technical, construction or legal reasons



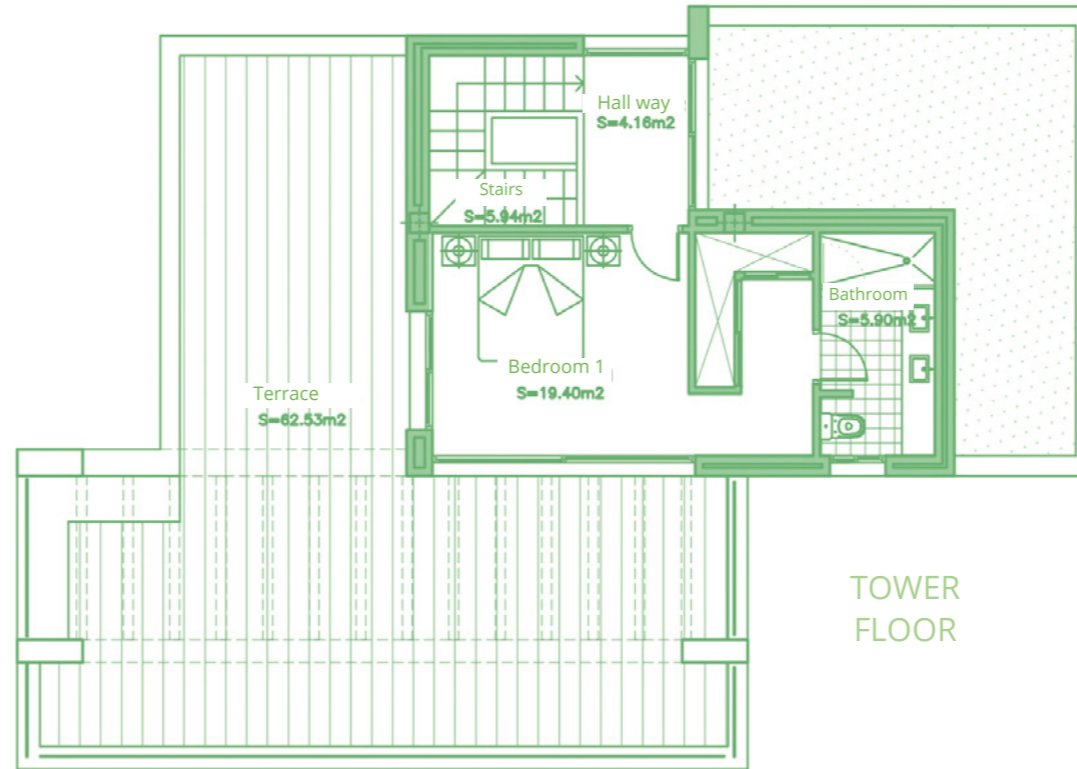
BAR SCALE



APARTMENT 822
3 BEDROOMS
BLOCK 8, TYPE B. TOWER FLOOR



BLOCK B



SURFACES	
Surface of constructed area	142,93 m ²
Surface of communal area	15,28 m ²
Surface of terrace area	162,55 m ²
TOTAL SURFACE	320,76 m²
Surface of utilised area	116,48 m ²

Information given is subject to modification for technical, construction or legal reasons





In compliance with the DECREE of the Junta de Andalucía 218/2005, the useful surface of exterior floor spaces which are for the private use of the dwellings means 50% of the actual surface to a maximum of 10% the useful enclosed surface.

Information, computer graphics and graphic documentation that appear in this document are indicative, finishings may include extras that are subject to changes arising from final project and its construction. All the furniture is merely decorative. The other information referred to in R.D.218/2005 of the Government of Andalusia, is available in our offices for consultation.