

Ground floor | Planta baja

72,80m²

Useful surface of the apartment
Superficie útil de la vivienda

49,35m²

Useful surface of the terrace
Superficie útil de la terraza

81,55m²

Constructed surface of the apartment
Superficie construída de la vivienda



Ground floor | Planta baja

84.55m²

Useful surface of the apartment
Superficie útil de la vivienda

27,05m²

Useful surface of the terrace
Superficie útil de la terraza

96,05m²

Constructed surface of the apartment
Superficie construída de la vivienda



First floor | Primera planta

85,20m²

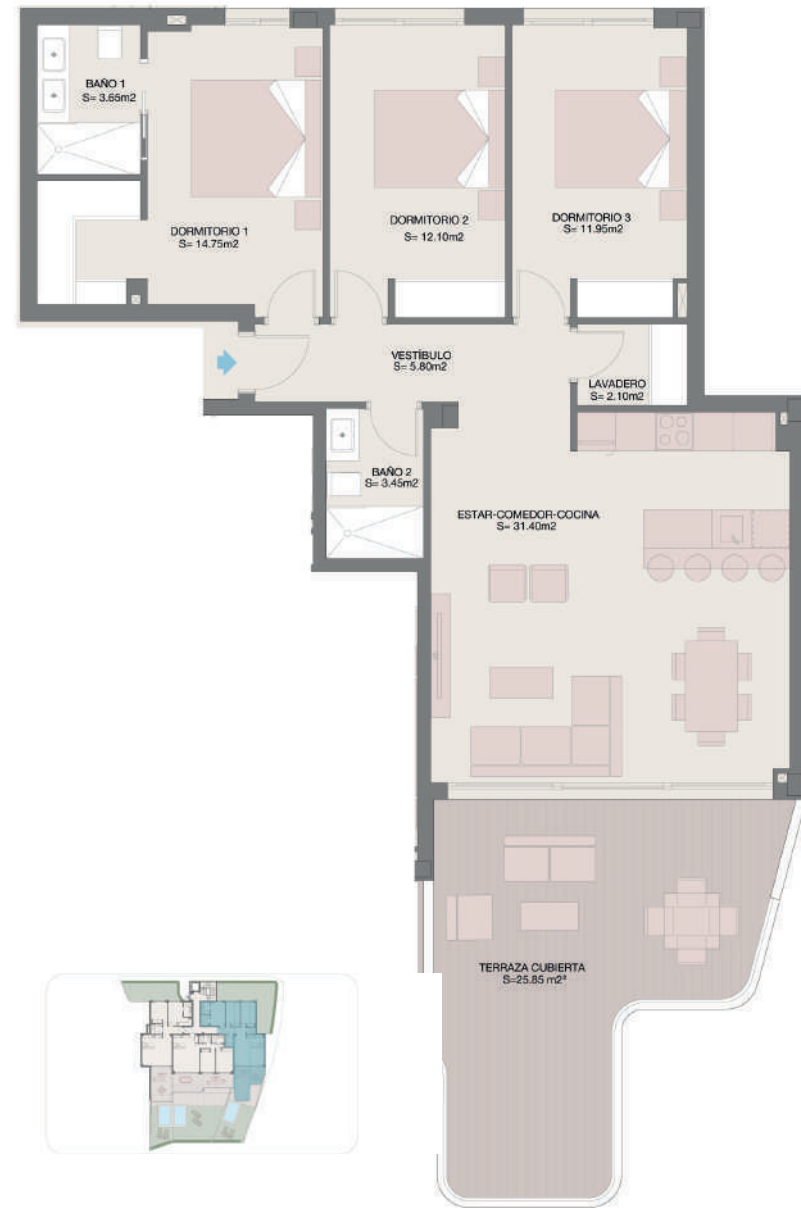
Useful surface of the apartment
Superficie útil de la vivienda

25,85m²

Useful surface of the terrace
Superficie útil de la terraza

97,85m²

Constructed surface of the apartment
Superficie construída de la vivienda



First floor | Primera planta

73,05m²

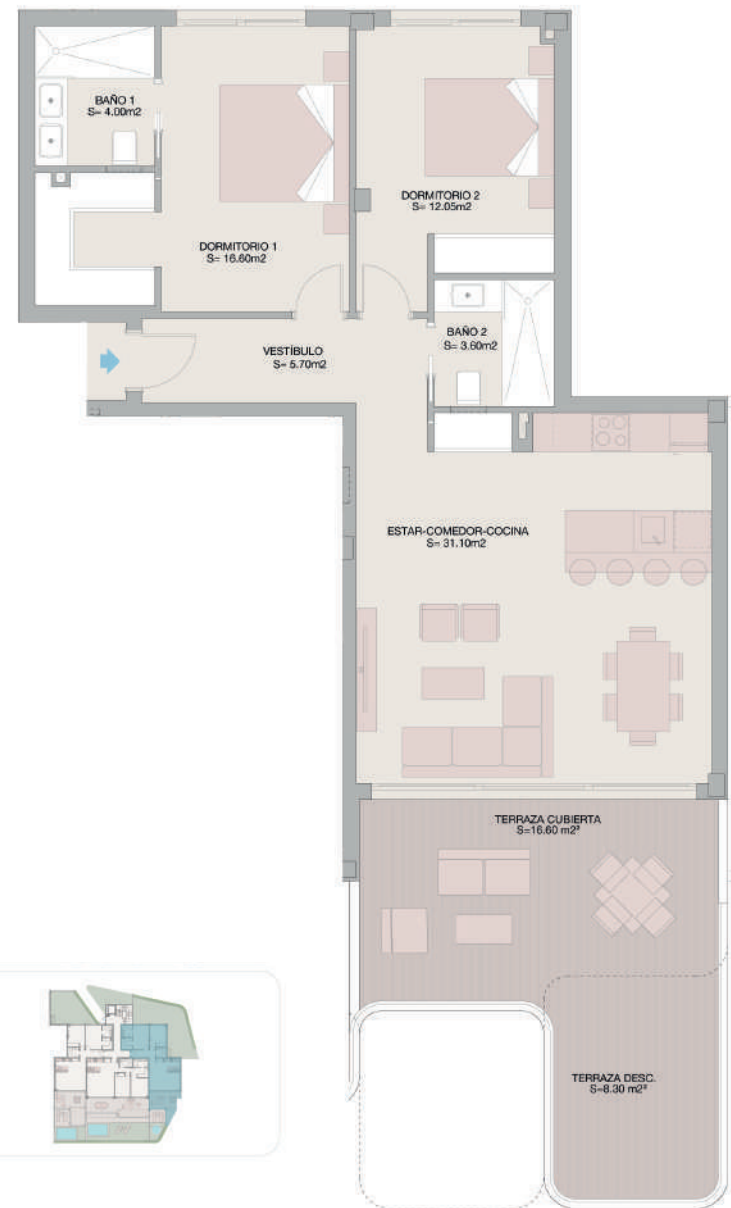
Useful surface of the apartment
Superficie útil de la vivienda

24,90m²

Useful surface of the terrace
Superficie útil de la terraza

84,30m²

Constructed surface of the apartment
Superficie construída de la vivienda



Second floor | Segunda planta

84,20m²

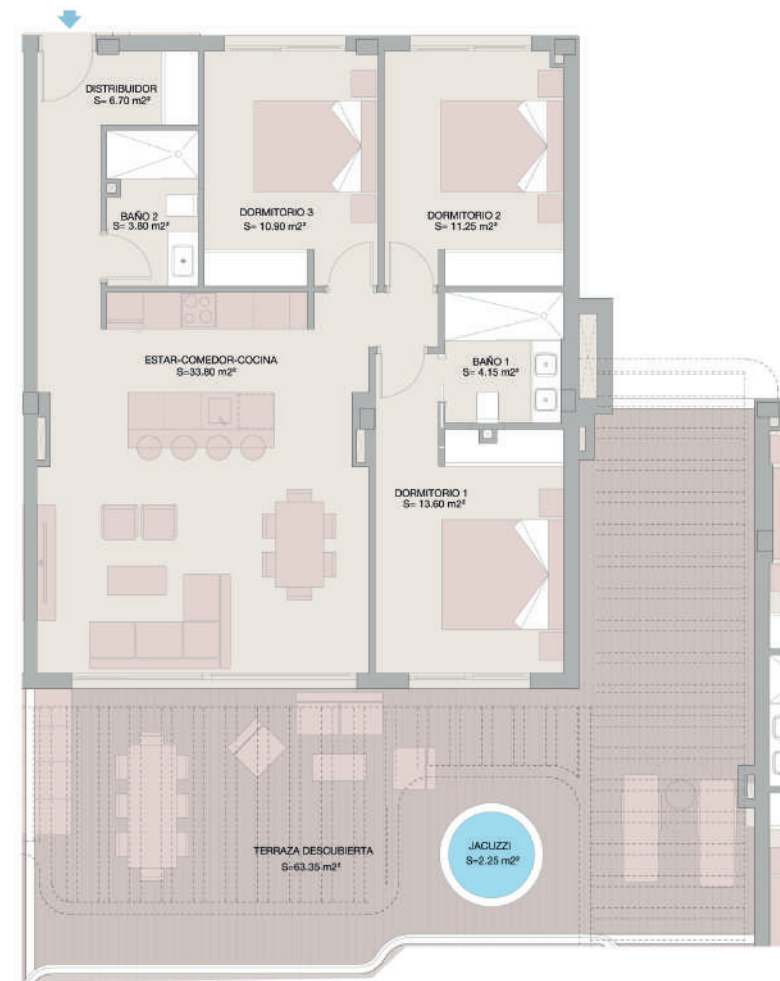
Useful surface of the apartment
Superficie útil de la vivienda

63,35m²

Useful surface of the terrace
Superficie útil de la terraza

96,00m²

Constructed surface of the apartment
Superficie construída de la vivienda



Second floor & Penthouse | Segunda planta & Ático

$86,85\text{m}^2 + 22,10\text{m}^2$

Useful surface of the apartment
Superficie útil de la vivienda

$75,90\text{m}^2 + 64,70\text{m}^2$

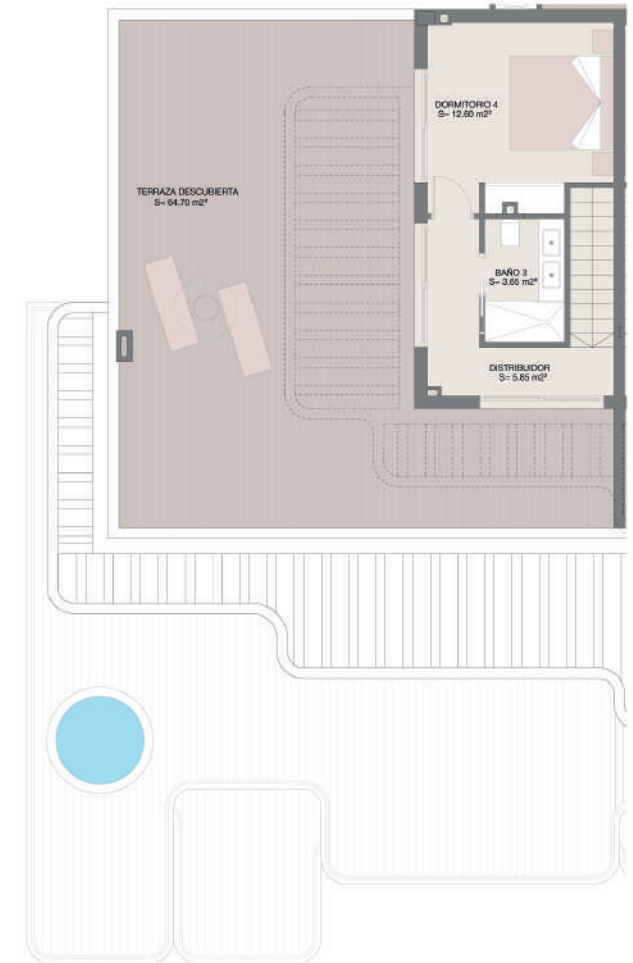
Useful surface of the terrace
Superficie útil de la terraza

$98,95\text{m}^2 + 30,40\text{m}^2$

Constructed surface of the apartment
Superficie construída de la vivienda



PLANTA SEGUNDA



PLANTA ATICO

